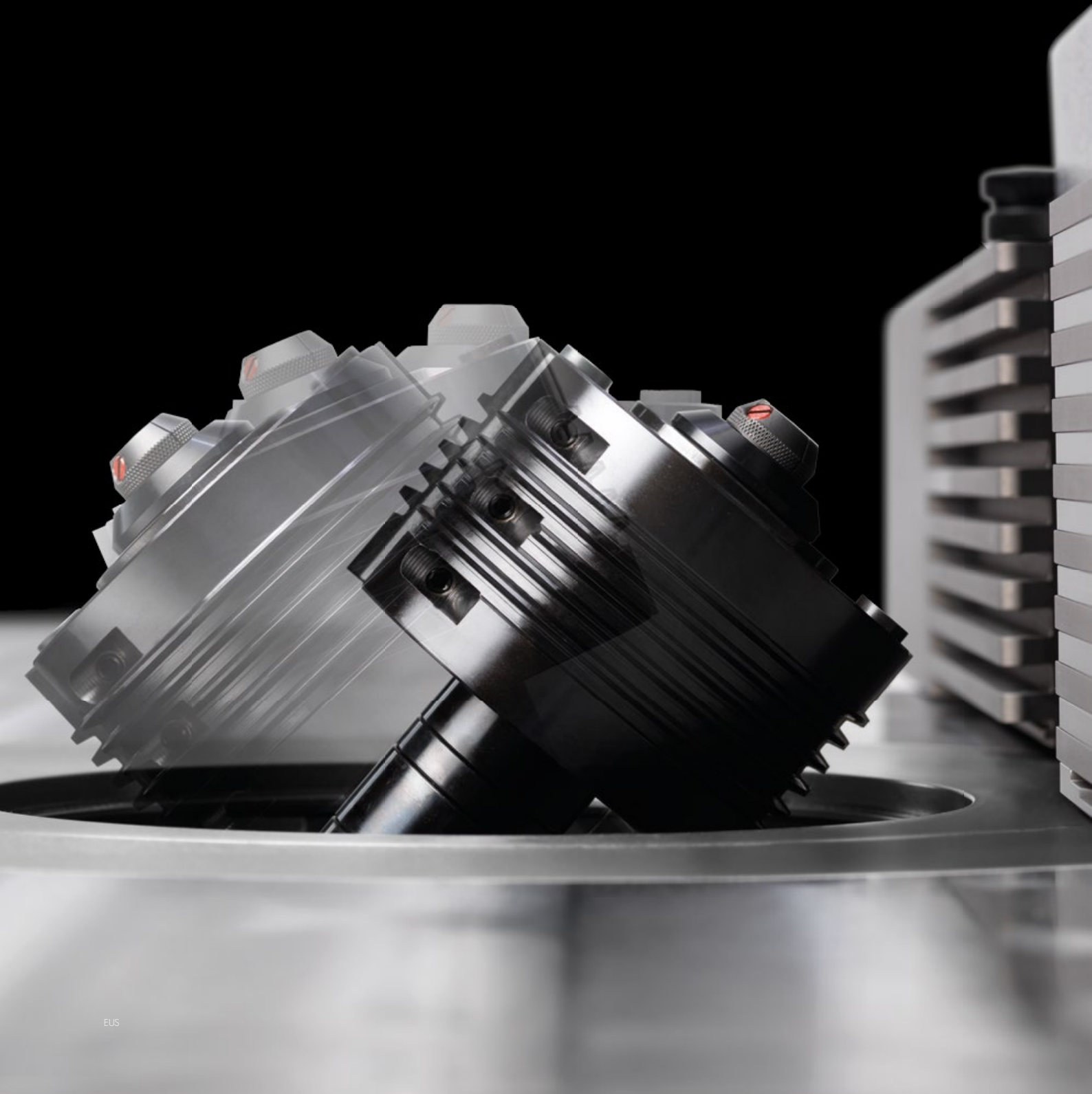


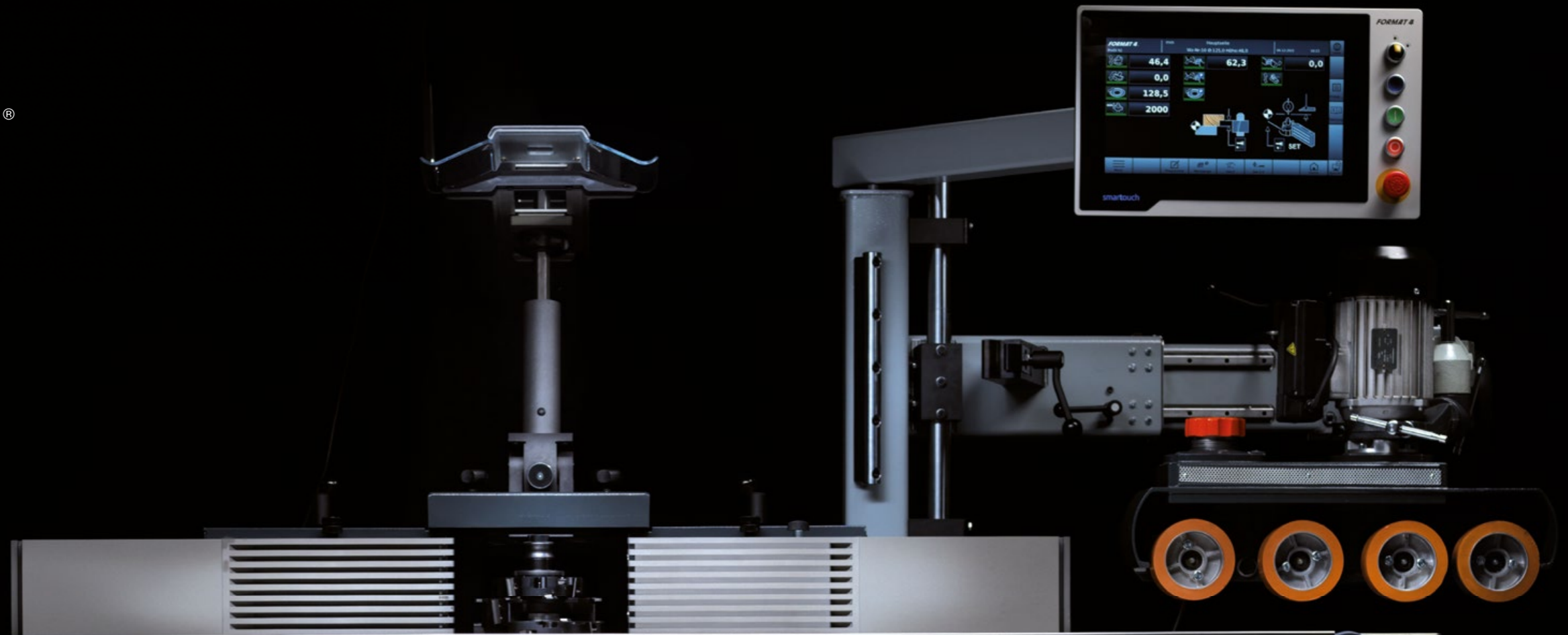
FORMAT 4®

profil 92 M e-motion

SET-UP TIMES ARE A
THING OF THE PAST



FORMAT 4®

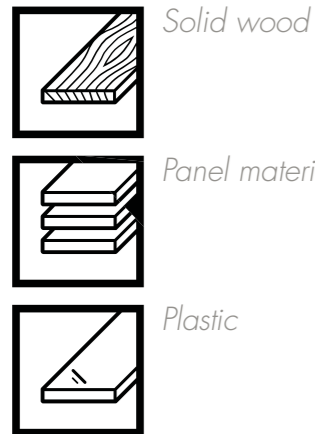


profil 92 M

FORMAT 4

profil 92 M e-motion

Set-up times are a thing of the past



The new 92 M shaper is the Format4 premium model providing maximum ease of use and ensuring absolute efficiency thanks to the shortest possible set-up times during milling operations. The sophisticated electro-spindle is equipped with an HSK 63F interface for an automatic tool quick-change system with pneumatic clamping. The tilting range of +/- 46 degrees allows unlimited processing possibilities. The rotation speed, spindle height and angle, as well as the spindle fence and even the table opening can be adjusted intuitively and precisely with the self-explanatory e-motion control from the 15" touchscreen control panel. The memory for tools, spindles and mortising programs enable perfect repeatability and short set-up times.

Controlled, eccentric inserts ensure maximum table supporting surface and considerably reduce the setting effort especially when tilting the spindle. The newly developed heavy-duty precision shaper fence has two controlled axes for precise depth adjustment of the entire stop and, an independent depth positioning of the right-hand, feeding jaw. Furthermore, the fence can be completely swivelled away from the work area for convenient access during curved moulding operations. Optionally, the Format4 profile 92 M can also be equipped with an electrically height-adjustable power feeder.



profil 92 M e-motion

- » Electro-spindle with variable speed and HSK 63F interface
- » Double pivoting 2 x 46°
- » Swing-away fence stop with two controlled axes
- » HSK 63 quick-change tool system
- » Table opening with controlled, eccentric insert rings
- » Intuitive e-motion control for shaper spindle, fence stop and table opening



profil 92 M e-motion

- » Electro-spindle with variable speed and HSK 63F interface
- » Double pivoting 2 x 46°
- » Swing-away fence stop with two controlled axes
- » „Integral“ safety bar guides 25¹/₃₂" (650 mm)
- » 26³/₈" (670 mm) table extension on both sides with 86³/₆₄" (2200 mm) extendable frame
- » Electrical height-adjustable feed support incl. horizontal tube
- » HSK 63 quick-change tool system
- » Table opening with controlled, eccentric insert rings
- » Intuitive e-motion control for shaper spindle, fence stop and table opening

FORMAT4 Premium Machines for Premium Requirements

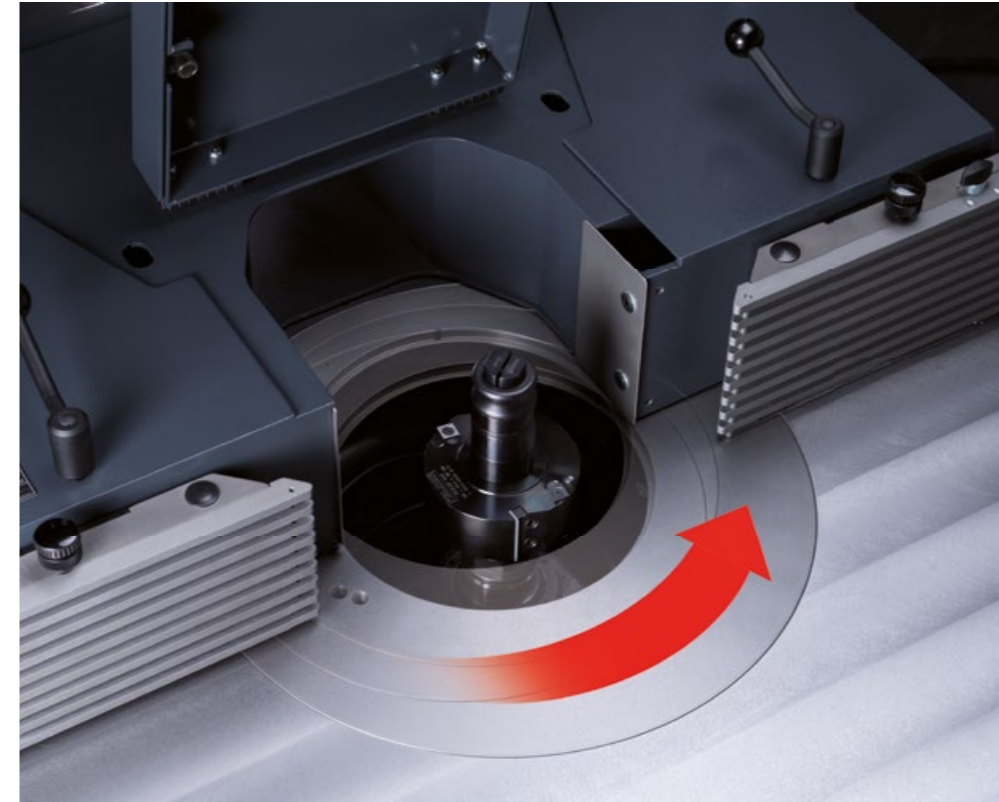
- » Constantly high performance in industrial continuous operation
- » Customer specific optimised production solutions
- » Solid design with premium components
- » Wide range of configuration packages with high-tech solutions
- » Complete engineering precision
- » Premium user comfort
- » Quality and precision from AUSTRIA
- » Uncompromised productivity
- » Perfect service package before, during and after the purchase
- » Tailor made financing solutions
- » Experience in machine construction since 1956

The most important highlights at a glance



Intuitive e-motion control for moulder shaper, fence stop and table opening

The rotation speed, spindle height and angle, as well as the spindle fence and even the table opening can be adjusted intuitively and precisely with the self-explanatory e-motion control from the 15" touchscreen control panel. The memory for tools, spindles and mortising programs enable perfect repeatability and short set-up times.



10³/₆₄" (255 mm) table opening with controlled, eccentric insert rings

Controlled, eccentric inserts ensure maximum table supporting surface and considerably reduce the setting effort especially when tilting the spindle. With the eccentric insert rings, the table opening can be perfectly adapted to the tool without having to add or remove the insert rings.

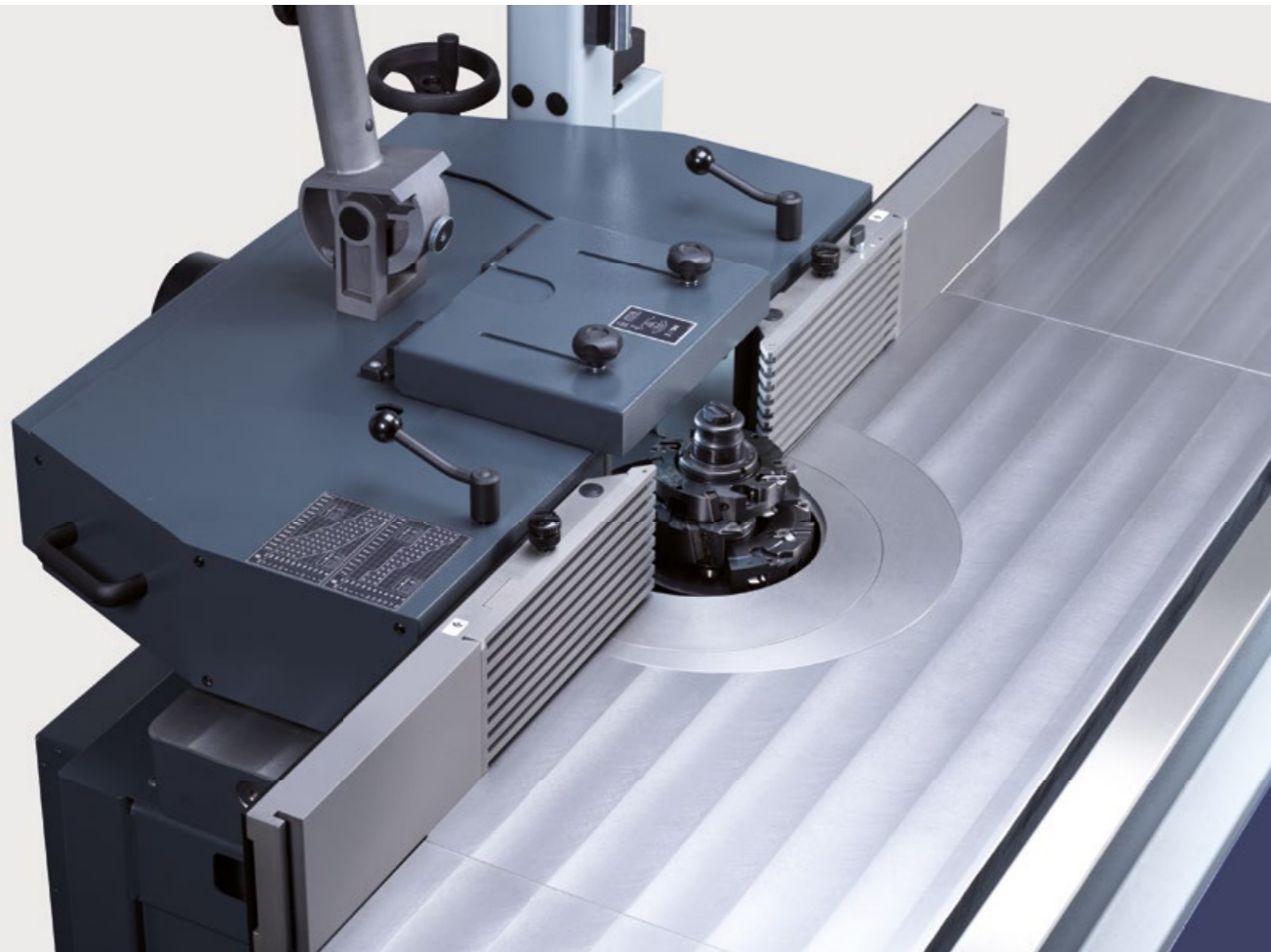


The tilting range of +/- 46 degrees allows unlimited processing possibilities.



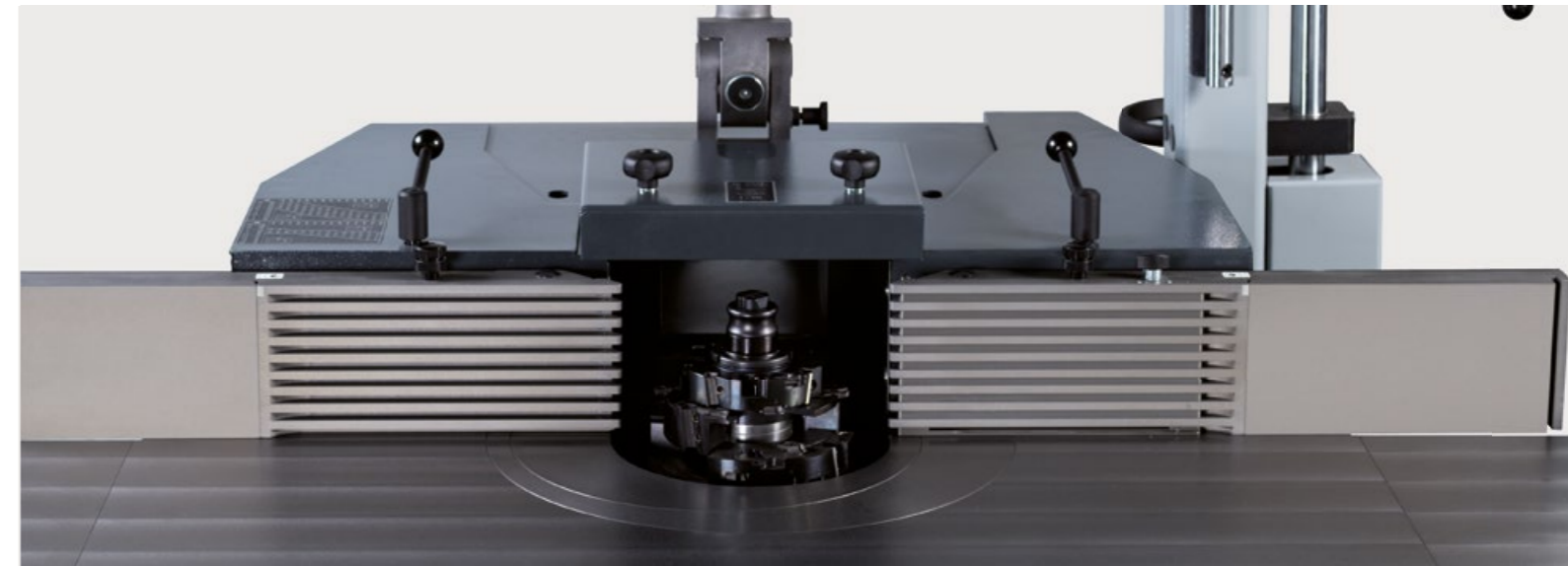
HSK 63F interface

The sophisticated electro-spindle is equipped with an HSK 63F interface for automatic tool quick-change system with pneumatic clamping.



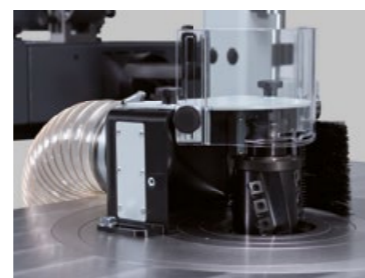
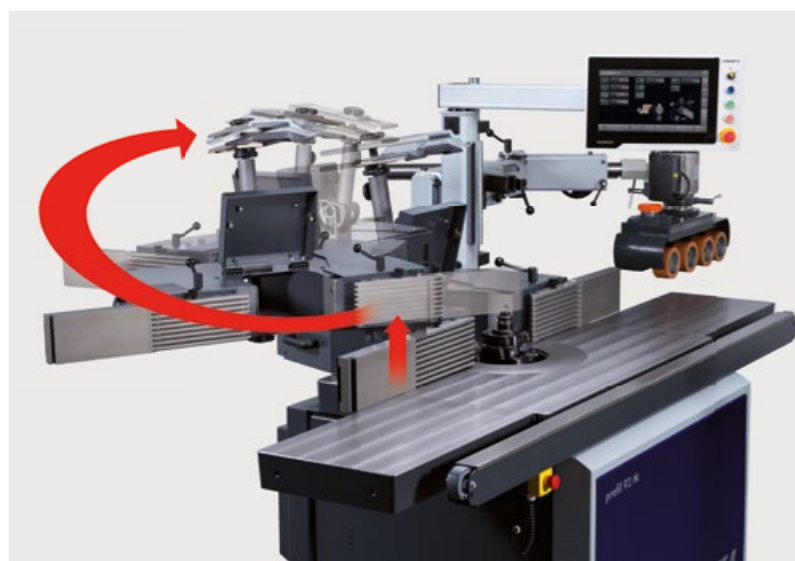
Precision shaper fence „250“ with two controlled axes

Self-explanatory e-motion control on the 15" touchscreen is used to set the depth of cut and, depending on the type of milling work, the position of the fence. The heavy Format4 precision shaper fence is positioned electrically to the set values without the need for additional manual clamping.



Improved safety

The Integral shaper safety fence offers even more protection through continuous and quickly positioned fence plates. Option



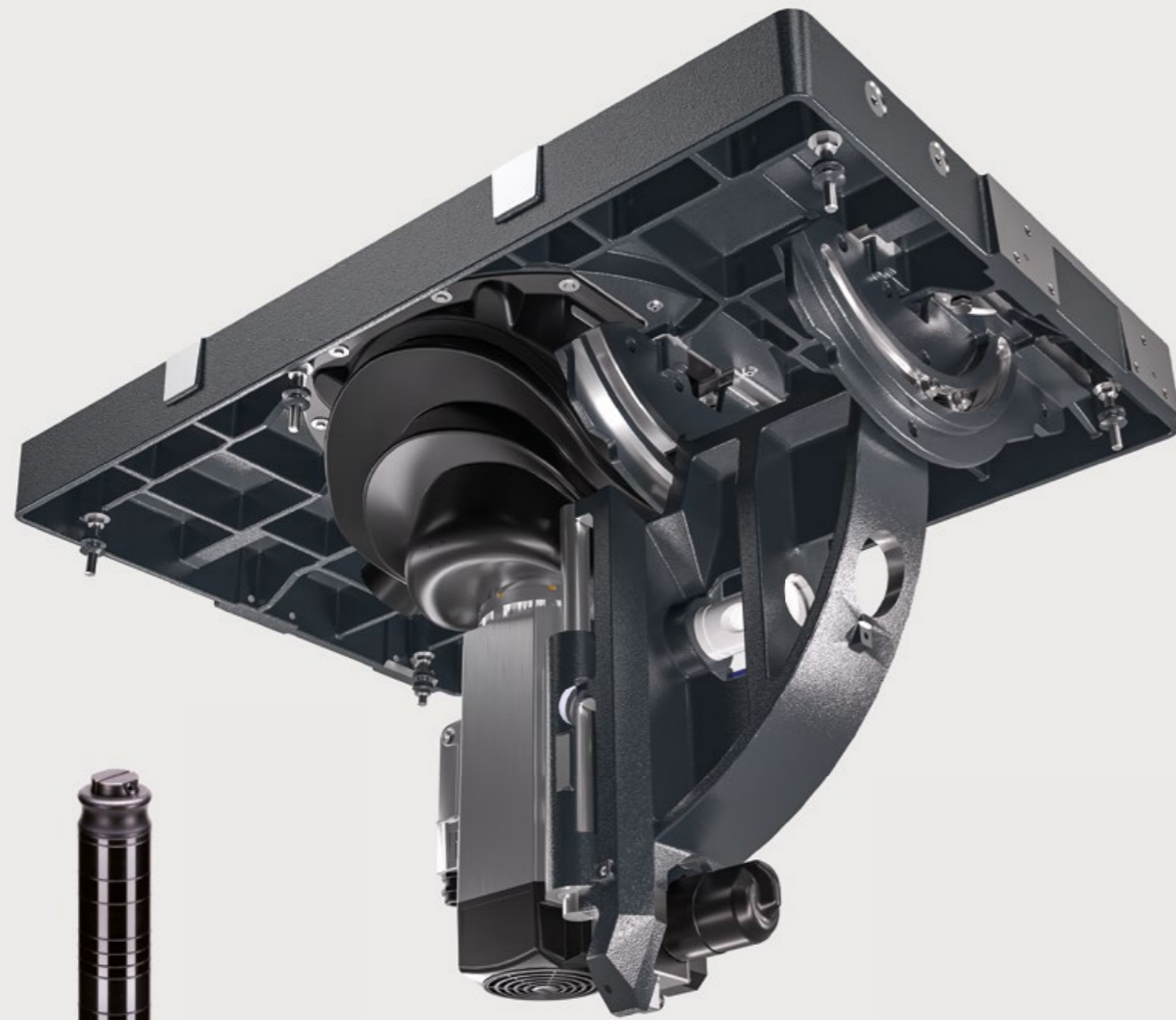
For curved moulding work

The fence can be completely swivelled away from the work area.



Centrex shaper guard

The high-quality, flexibly adjustable Centrex shaper guard, which presses the workpiece against the moulding table and fence, ensures safety and comfort during manual milling work. When using a power feeder, the Centrex shaper guard is simply moved out of the working area.



High-precision milling table

The heavy, solidly ribbed milling table made of grey cast iron guarantees maximum precision and stability.

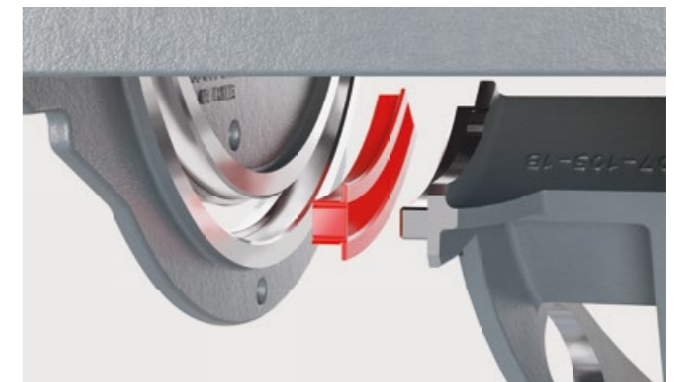
The profil 92 shaper unit with highly efficient electro-spindle

The powerful profil 92 shaper unit has been specially developed for industrial use. Direct drive via an electro-spindle. In Format4 machine units, the tilt segment „Easy-Glide“ meets the highest requirements for trade and industry. A precise, forced guided, double suspension guarantees maximum load bearing and zero backlash tilting.



Quick-change cutter arbor system HSK F63

The profil 92 electro-spindle cutter arbor is equipped with an HSK F63 quick-change tool system with pneumatic clamping and an air jet nozzle system for cleaning the contact surfaces. In a matter of seconds, cutter arbors with pre-mounted cutter tools can be changed for series milling work. The HSK F63 quick-change cutter arbor system also ensures maximum flexibility and efficiency when using different cutter arbor diameters or when using shaft cutters with collet chucks.



Easy-Glide – tilting of the unit without lubricants or maintenance

The patented tilt segment ‚Easy-Glide‘ fulfills the highest requirements in businesses and industries. A precise, forced guided, double suspension guarantees maximum load bearing, zero backlash tilting, and is absolutely maintenance free. A special, highly durable synthetic material situated in the guide of the tilting segment ensures extremely smooth movement and long-lasting precision. The tilting guide system, a synthetic material tried and tested in aerospace and lock construction, works without the requirement of lubrication and is totally resistant to dust.

On the „Easy-Glide“ system have a 6 year guarantee!



Front pull-out
With the pull-out extension, even large work pieces can be processed with ease.



Electrical height-adjustable feed support
The height of the power feeder is set via the self-explanatory e-motion control on the 15" touchscreen. The infeed unit positions itself to the selected setting value utilizing an electric motor, and the integrated automatic on/off switch ensures absolute ease of operation. For set-up work, the feeder is swivelled completely out of the working area.



Parts list holder with clipboard
The convenient parts list holder with A4 clipboard is mounted on the overhead control panel, keeping your parts lists in sight at all times.

Control
Operating the profil 92 precision shaper is very straightforward, intuitive and fast with the self-explanatory e-motion control on the 15" touchscreen control panel located at eye level. The touchscreen control panel can be rotated and tilted for the individual operating position or swivelled completely out of the working area.



The databases and program memories included in the e-motion software package save you a great deal of time when setting up and adjusting the profil 92.

- » The tool database stores an unlimited number of accessible milling tools.
- » Work processes, whether simple, complex or recurring, can be stored and accessed as programs without limitation.
- » All settings of the last five entries are saved so accessing these values again saves valuable time.
- » The network preparation and the USB interface ensure easy updating of the tool database and software.
- » Remote service is provided via Teamviewer.

Technical specifications

Electrics		profil 92 M e-motion
001	3x 400 V motor voltage	S
002	Special voltage (208V/230V/400V/480V)	O
004	50 Hz motor frequency	S
005	60 Hz motor frequency	W
008	7.5 kW motor with variable rotation speed	O
009	10 kW motor with variable rotation speed	O
12	Switch contact for the control of an extractor	O
13	Operating hour meter	S
14	3-phase CEE coupling for additional equipment with time-delayed connection (essential for the use of a power feeder)	S
Shaper unit and shaper fence		
106	HSK 63F cutter-Ø 30 mm, 5 ³³ / ₆₄ " (140 mm) usable height, speeds from 1,000 – 10,000	O
107	HSK 63F cutter-Ø 1 1/4", 5 ³³ / ₆₄ " (140 mm) 140 mm, instead of Ø 30 mm, speed from 1,000 – 10,000	O
108	HSK 63F cutter-Ø 40 mm, 6 ¹⁹ / ₆₄ " (160 mm), instead of Ø 30 mm, speeds from 1,000 – 10,000	O
109	HSK 63F cutter-Ø 50 mm, 6 ¹⁹ / ₆₄ " (160 mm), instead of Ø 30 mm, speeds from 1,000 – 10,000	O
110	Collet chuck OZ HSK F63, clamping range 2-25 mm, instead of Ø 30 mm, speeds from 11,000 – 18,000	W
112	Shaper fence 250 for toolsdia. max. 9 ²⁷ / ₃₂ " (250 mm)	S
116	21 ¹ / ₃₂ " (550 mm) anodised aluminum fence plates	S
117	21 ¹ / ₃₂ " (550 mm) spindle fence plate, aluminum anodised with safety bar guides	O
118	„Integral“ safety bar guides 25 ¹⁹ / ₃₂ " (650 mm)	O
123	Centrex spindle shaper guard	S
180	50" (1270 mm) extendable frame with emergency stop	O
Control		
19	10 ³ / ₆₄ " (255 mm) table opening with controlled, eccentric insert rings	O
-	e-motion control system with touch function in control panel installed at eye level; USB interface and preparation for network connection; the control panel can be optimally adjusted to the right position for the operator and can be swung away from the working area.	S
-	Position controlled height adjustment;	S
-	Position controlled angle adjustment +/-46°	S
-	Position controlled spindle shaper fence	S
183	26 ³ / ₈ " (670 mm) table extension on both sides with 86 ³⁹ / ₆₄ " (2200 mm) extendable frame	O
-	Variable rotation speed rpm	1.000-18.000
-	Table opening 12 ¹⁹ / ₃₂ " (320 mm)	S
Important accessories		
215	Application routing device for fixed bed shaper	O
220	604-110 - Parts list holder with A4 clipboard	O
-	300-04-0700 - Collet chuck HSK F63 with ball bearing collet nut A76/RL. Clamping range 2-25 mm for OZ collet chuck	O
-	606-113 - HSK 63F spindle -Ø 30 mm, 5 ³³ / ₆₄ " (140 mm) useable height	O
-	606-114 - HSK 63F spindle -Ø 40 mm, 6 ¹⁹ / ₆₄ " (160 mm) useable height	O
-	606-115 - HSK 63F cutter-Ø 50 mm, 6 ¹⁹ / ₆₄ " (160 mm) useable height	O
-	606-116 - HSK 63F spindle -Ø 1 1/4", 5 ³³ / ₆₄ " (140 mm) useable height	O
Feeder device		
212	Tilt-away device for power feeder with pneumatic spring	O
213	Electrical height-adjustable feed support incl. horizontal tube	O
General		
27	Prepared for minimum transport width 37 ¹³ / ₃₂ " (950 mm)	O
-	Extraction connection-Ø in mm Spindle fence/below table level spindle aggregate	140/80
-	Working height in mm	890
-	Weight kg (with standard configuration)	730
-	Min. transport width in mm	1305 (950)

Product range



Sliding Table Panel Saws



Shapers

Planers



Edgebanders



Wide Belt Sanding & Brushing Machines

Heated Veneer Presses



CNC Machining Centers



Nesting-CNC Machining Centers



Beamsaw Vertical saw



Vacuum panel lifter, Return systems & Feeding Units

FORMAT 4®

FORMAT4 Uncompromising expertise for the highest of requirements

The Felder Group premium brand has met the highest standards of professional users since 2001. The customised high-performance solutions are uncompromisingly innovative, offer maximum operating comfort and complete productivity.

FELDER GROUP

KR-Felder-Straße 1
A-6060 HALL in Tirol

☎ Tel. 05223 55306
www.format-4.us
[Contact](#)