

FORMAT 4[®]

D-Jet

CNC DRILL AND DOWEL
MACHINING ON THE
SMALLEST OF SPACES



FORMAT 4[®]



CNC drill and dowel machining on the smallest of spaces



D-Jet

- » CNC machining in the smallest of spaces 3.5 m²
- » Fully automatic insertion of anchors and glue
- » Various cabinet connections can be processed
- » Up to 4 workpieces simultaneously
- » Intuitively designed software F4Integrate
- » **F4[®]Solutions**^{ready}

The CNC-controlled drilling and dowel insertion center from Format4 is the ideal machine to take your cabinet production to the next level. The D-Jet is the perfect solution for industrial cabinet making as a supplement to a CNC nesting machine, but also as a stand-alone solution for the skilled craftsman. The machine stands out due to its space-saving design with a small footprint of only 3.5 m² as well as its outstanding price-performance ratio. Maximum efficiency through zero set-up time: time-consuming positioning of consoles or vacuum cups is completely eliminated.

The benefits at a glance:

- » Intuitive controls
- » Flexibility in the choice of joints
- » Drill head with three horizontal and three vertical spindles as well as a grooving saw
- » Up to four workpieces simultaneously processable
- » Automatic dowel insertion by means of a large-dimensioned oscillating feeder
- » Small installation dimensions due to a space-saving design

FORMAT4 Premium Machines for Premium Requirements

- | | |
|---|--|
| <ul style="list-style-type: none"> » Constantly high performance in industrial continuous operation » Customer specific optimized production solutions » Solid design with premium components » Wide range of configuration packages with high-tech solutions » Complete engineering precision » Premium user comfort | <ul style="list-style-type: none"> » Award winning design » Quality and precision from AUSTRIA » Uncompromising productivity » Perfect service package before, during and after the purchase » Automation solutions » Machines and software from one supplier » Tailor made financing solutions |
|---|--|

The most important highlights at a glance



FORMAT4 Highlight

Intuitive touch-screen control on a 24" monitor

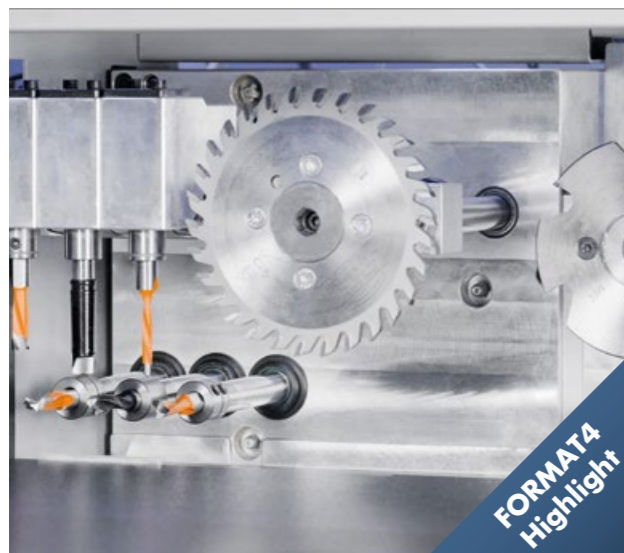
The advanced and intuitive touch-screen control concept guarantees maximum user friendliness. The clearly structured and self-explanatory user interface allows you to operate the machine with ease and ensures maximum productivity. The machine controls are clearly displayed graphically and various programs, set-points and commands can be executed quickly, easily and accurately at the touch of a button.



FORMAT4 Highlight

Pendulum operation with 2 or 4 working areas

The Format4 D-Jet has two working areas that are designed for productive pendulum operation. Upon request, four working areas are also possible. Thanks to the retractable fences, component sizes of a maximum length/width of 110 1/4" (2800 mm) and a height of 3 1/8" (80 mm) can be processed with ease. The four workpiece clamps (6 optionally available) guarantee optimum hold on the machine.



FORMAT4 Highlight

DH6 Drilling Head

The D-JET is equipped with a DH6 drilling head as standard. It features:

- » 3 vertical drilling spindles
- » 3 horizontal drilling spindles
- » 1 grooving saw blade in the X direction

FORMAT4®

Details



Large working area at a small footprint

On the large working area, components of at least 3/4" (20 mm) length/width and 3/8" (10 mm) height up to 1400 mm length/width (optionally extendable to 110 1/4" (2800 mm) and 3 1/8" (80 mm) height can be processed.



Phenolic resin table support

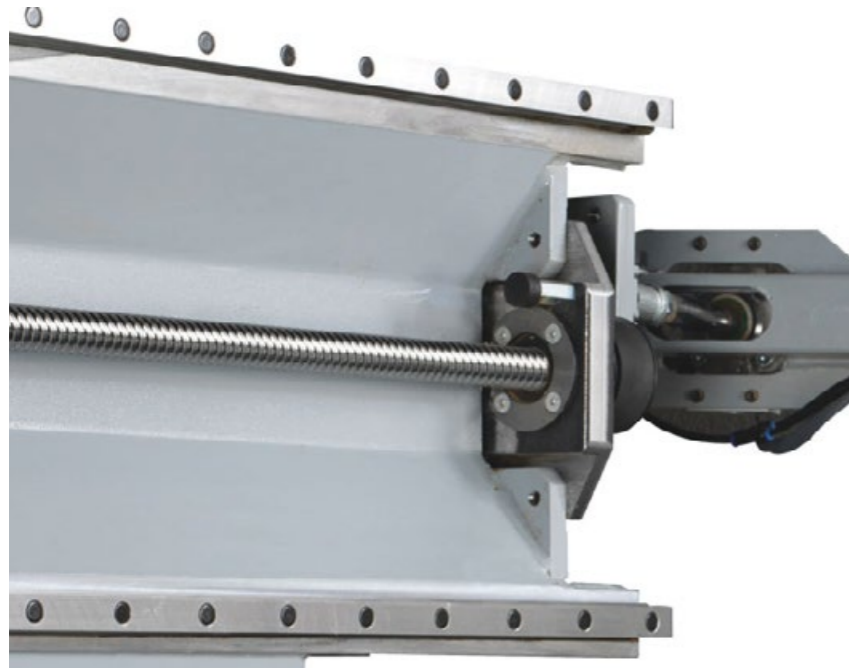
The work table is made of phenolic resin and enables precise and careful placement of the workpieces.

Table extensions

For handling large, heavy workpieces, the work table can be extended using table extensions.

Automatic central lubrication system

The lubrication is applied as and when required to the guide carriages of the X, Y and Z axis as well as the bearing spindles in Y and Z. Lubrication is carried out automatically after a preset time.



Linear guides

X-axis guiding system:

Positioning is carried out by recirculating ball bearings running along hardened and polished linear guides. The X-axis is positioned via a cambered rack and pinion gear.

Y- and Z-axis guiding system:

Positioning is carried out by recirculating ball bearings running along hardened and polished linear guides. The Y- and Z-axis is positioned by a polished recirculating ball spindle.

Processing of "Lamello Clamex P"

The D-Jet allows perfect processing of the "Lamello Clamex P" connectors. With the additional Lamello processing unit it is possible to insert the Clamex pockets both on the front side and on the upper surface.

Processing of "OVVO/Lockdowel"

"OVVO/Lockdowel" perfect processing with Format4 D-Jet. With the additional Lockdowel processing unit, milling grooves for the connectors can be made both on the face and on the top surface.

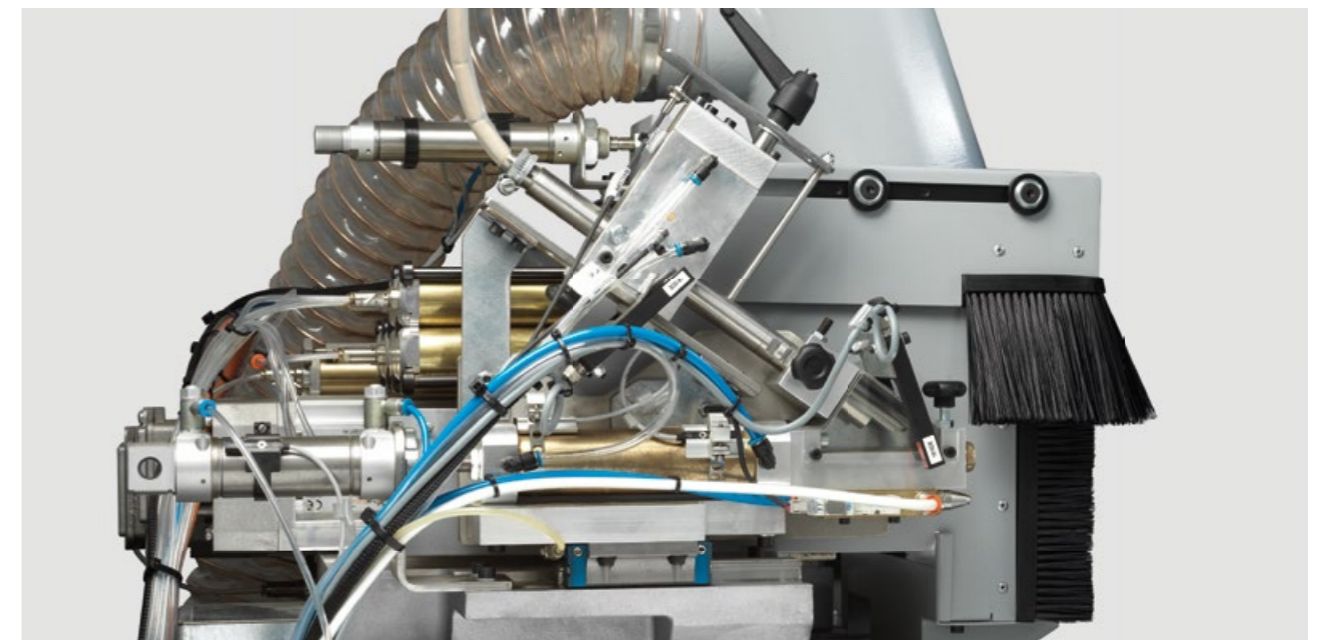
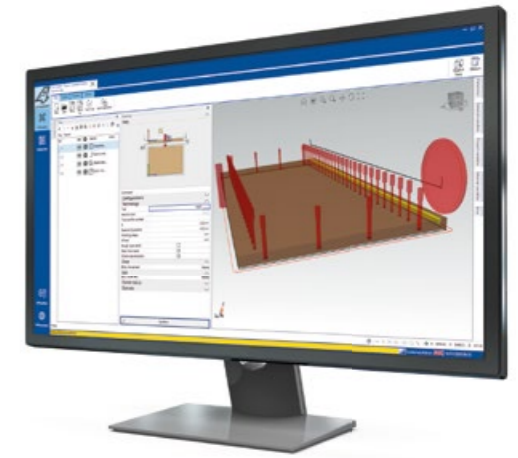
FORMAT 4®

F4®Integrate: The pioneering CNC software

For the highest demands, all inclusive - tool library, programming section and an operator control panel on the machine with a consistent and intuitive user interface. F4®Integrate is a software developed by Format4®. Developed from practical experience for practical use in cooperation with our CNC customers, F4®Integrate meets the highest demands in modern CNC machining.

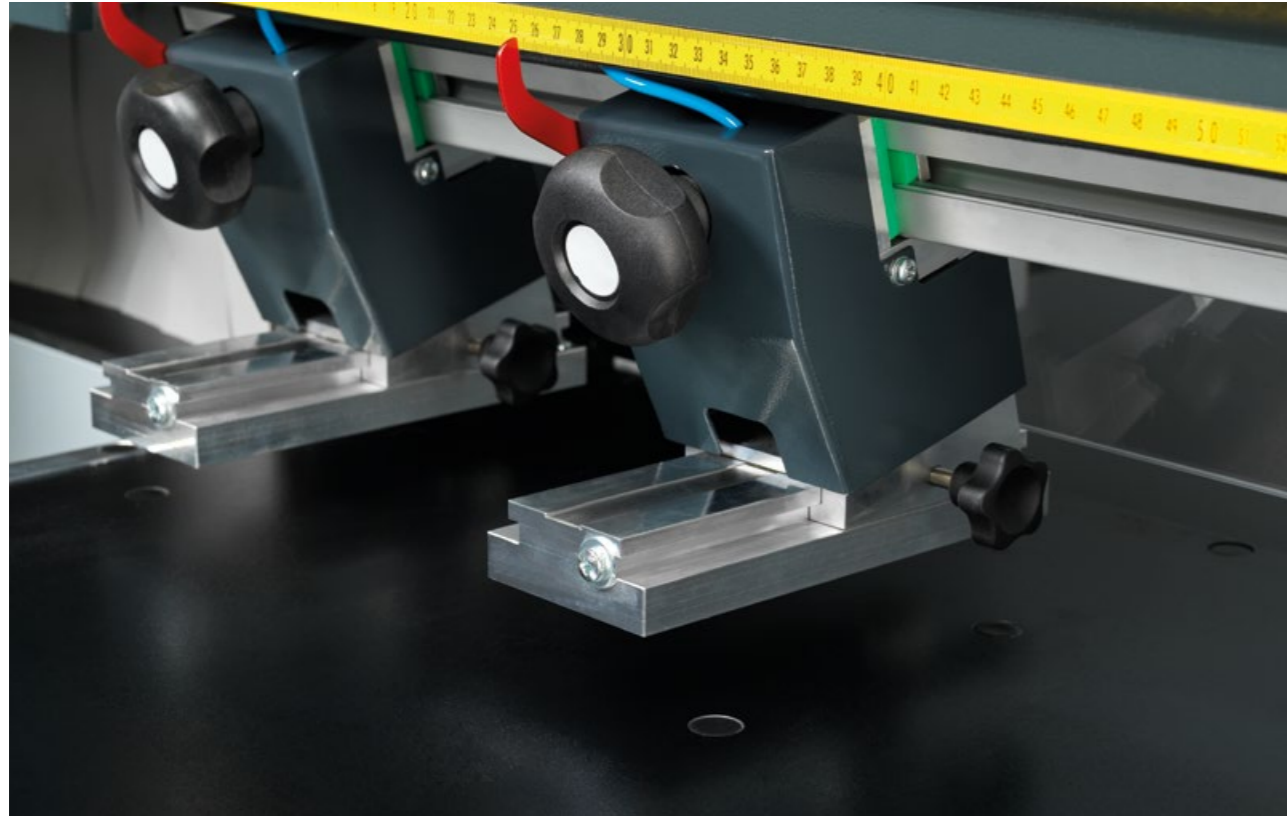
Enjoy the comfort of a state-of-the-art and well-coordinated user interface. Tool library (F4Toolbox), programming section (CAM area with integrated CAD area, F4Create) and machine operation control (F4Operate) all packed into just one single screen, with a consistent and intuitive user interface.

F4Integrate is based on G-Code, so external industry programs can be easily connected and the transfer of programs smoothly organized.



Anchor unit in Y-axis

Fully automatic insertion of anchors and glue. The anchor length can be adjusted quickly and without tools, the software manages the glue quantity and adapts it exactly to your needs. Anchors from $\frac{3}{4}$ " to $1 \frac{1}{2}$ " (280 to 40 mm) in length can be used. In the standard version anchors with a diameter of $\frac{5}{16}$ " (8 mm) are used, this can optionally be changed to $\frac{3}{16}$ " , $\frac{1}{4}$ " , $\frac{5}{16}$ " (5, 6 or 10 mm).



Workpiece clamps

Four workpiece clamps (6 optionally available) guarantee optimum hold on the machine.



Comfort Footswitch Bar

At the front of the machine, a foot switch bar is integrated in the pedestal along the entire length of the working area. This eliminates the need to search for or move the foot pedal during workpiece positioning. The simple construction blends into the coherent design of the machine.

FORMAT 4®

Product range



Sliding Table Panel Saws



Shaper Spindles

Planers



Edgebanders



Wide Belt Sanding & Brushing Machines

Heated Veneer Presses



CNC Machining Centers



Nesting-CNC Machining Centers



Beamsaw Vertical saw



Vacuum panel lifter, Return systems & Feeding Units

FORMAT 4®

FORMAT4 Uncompromising expertise for the highest of requirements

The Felder Group premium brand has met the highest standards of professional users since 2001. The customized high-performance solutions are uncompromisingly innovative, offer maximum operating comfort and complete productivity.

FELDER GROUP

KR-Felder-Straße 1
A-6060 HALL in Tirol

☎ Tel. 05223 55306
www.format-4.us
[Contact](#)