

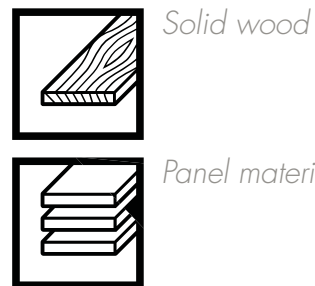
A man with a beard and a yellow shirt is working on a wooden structure in a workshop. He is leaning over a workbench, using a tool to work on a piece of wood. The background shows various wooden pieces and tools hanging on the wall.

Hammer®

K4 perform

The most powerful
for challenging use

The K4 perform is the most powerful Hammer saw ever



The sliding table saw Hammer K4 perform is the luxury model among the Hammer-saws and was developed to handle the heaviest woodworking tasks. The machine is characterised by industrial quality machine components, a massive workmanship and highest accuracy through innovative FELDER systems.

With the tilting saw blade unit and precision double guiding for precise angle and height adjustment, the K4 perform guarantees a new dimension of efficiency. The built-in, electrically operated scoring saw blade with a Ø of $4\frac{23}{32}$ " (120 mm) makes cuts even through materials with sensitive surfaces a breeze. At the core of the K4 perform is a powerful 5.5 hp saw unit. The main saw blade with a Ø of up to $12\frac{13}{32}$ " (315 mm) is mounted in a solid saw shaft to allow a cutting height of $4\frac{3}{32}$ " (104 mm).

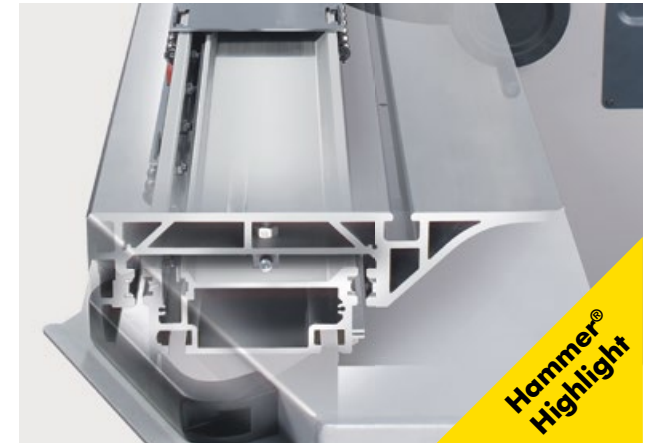
With its sensational equipment and high-quality workmanship, the Hammer K4 perform becomes a real profit maker.

The most important highlights at a glance



The new circular saw unit: Efficiency meets operating comfort

The enhanced circular saw unit with the patented tilt segment „Easy-Glide“ enables the combination of a main saw blade with a Ø from $9\frac{27}{32}$ " (250 mm) to $9\frac{27}{32}$ " (315 mm) and a $4\frac{23}{32}$ " (120 mm) scoring unit.



Format sliding table

The „perform models“ are constructed for maximum load bearing capacity and equipped with an industrial sliding table. The smooth precision guiding system guarantees absolute precision when cross cutting, rip cutting and formatting.



Grooving, slot and tenoning with the saw

Every hammer panel saw can be equipped with a preparation for the use of specialized dado tooling. The dado tool can be fitted to the saw arbour and makes it possible to make various width grooves, tenons and slots of between 8 and 19.5 mm in width.



Hammer - Decision making reliability for many years to come

Durability, functionality and reliability made in Austria – Hammer woodworking machines are top-quality products from Felder. Since 1997, Hammer has been producing high-quality yet affordable woodworking machines for the skilled trades and crafts. The models have been specifically designed for this customer group and are available in the basic, winner and perform configuration, offering price optimized solutions for

every requirement. Decades of experience building machines, Austrian craftsmanship, strict quality standards and tried and tested Felder system solutions, guarantee excellent woodworking machines, the best operating results and customer satisfaction for years to come. From the passionate woodworker to the business user with high demands, with machines from Hammer you are guaranteed reliability and precise woodworking.

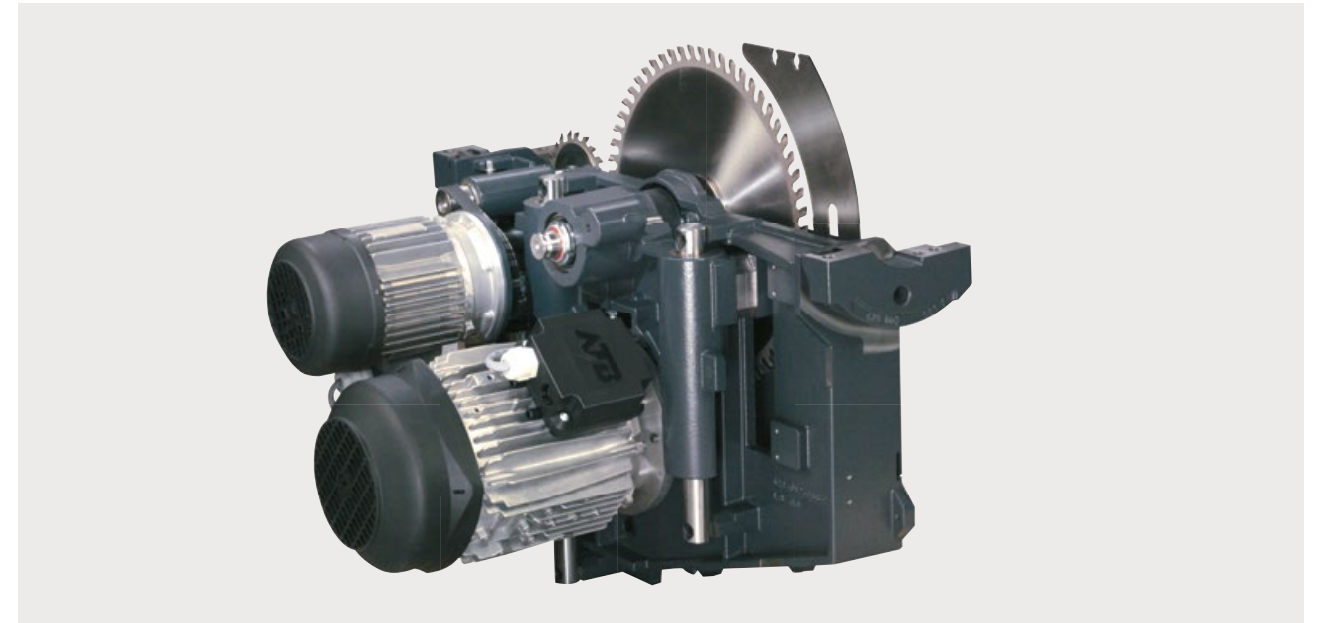
... why you should decide on a Hammer machine now:

- » Excellent value for money
- » Decision making reliability for many years to come
- » State of the art machine technology
- » Solid cast iron tables and units
- » High quality, unique detail solutions as part of the standard package
- » Top quality manufacturing with strict quality guidelines
- » User friendly
- » Classic design
- » Quality and precision from AUSTRIA
- » Compact functionality
- » Mobile as an option
- » Minimal space requirement
- » Quickest changeover times

Hammer®

Details | 5

Details that convince



Saw unit Hammer K4

Made entirely of grey cast iron, the circular saw unit of the Hammer K4 offers a new dimension of smooth operation and efficiency:

- » $4^{23}/_{32}$ " (104 mm) cutting height with a $12^{13}/_{32}$ " (315 mm) saw blade diameter
- » Use of dado tooling up to 19.5 mm in width
- » Zero point tilt
- » Oversized saw arbor with double trunnions
- » Maximum power transmission achieved through the Poly-V belts
- and counter surface
- » Optimal dust extraction with the completely enclosed, below table extraction system
- » Precise height adjustment via precision linear guides
- » Precise double trunnion system
- » Tilt segment "Easy-Glide"
- » Maximum load bearing capacity
- » Play-free tilt
- » Unaffected by dust
- » Completely maintenance free
- » No lubrication required



Grooving, slot and tenoning with the saw

Every hammer panel saw can be equipped with a preparation for the use of specialized dado tooling. The dado tool can be fitted to the saw arbour and makes it possible to make various width grooves, tenons and slots of between 8 and 19.5 mm in width.



Scoring unit

The electrically driven $4^{23}/_{32}$ " (120 mm) scoring saw blade ensures tear-free cuts and is perfect for materials with a surface that easily tears off. The scoring saw blade can be adjusted in height without clearance by means of easily accessible adjusting screws.



Saw blade tilt 90°–45°

The continuously variable tilt range between 90 and 45 ensures precise mitre cuts. End stops at the 90° and 45° position ensure the exact positioning of the settings. A large scale allows precise positioning and easy read-out of the corresponding values.

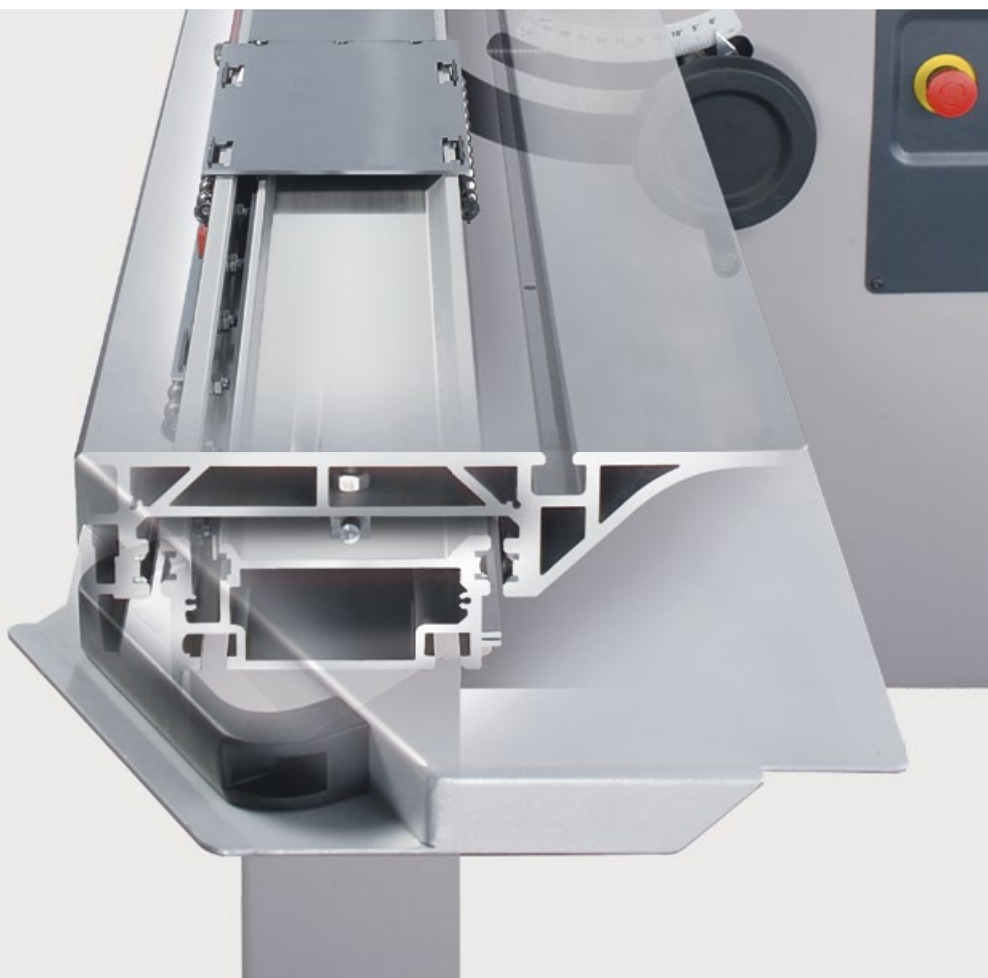


Industrial Saw Rip Fence

The professional rip fence, which runs on a chrome-plated round steel guiding bar, is extremely smooth and easy to operate. Precise settings with quick and fine adjustment.

Locking pin

Angles at 5 degree intervals and at 22.5° can be cut with the help of the index locating pins.



Format sliding table

The „perform models“ are constructed for maximum load bearing capacity and equipped with an industrial sliding table. The smooth precision guiding system guarantees absolute precision when cross cutting, rip cutting and formatting.

Outrigger table

The massive outrigger table with enlarged support surface and generously dimensioned telescopic crosscut fence enables you to precisely perform panel cuts, format cuts and cross cuts of unlimited workpiece dimensions.



Technical specifications

Electrics		K4 perform
001	3x 400 V motor voltage	S
002	3x 230 V motor voltage	W
003	1x 230 V motor voltage, motor power 4.0 HP (3.0 kW) S6/40%	O
004	50 Hz motor frequency	S
005	60 Hz motor frequency	W
008	Motor power 5.5 HP (4.0 kW) S6/40 %;	S
009	Motor power 7.5 HP (5.5 kW) S6/40%	O
28	Additional emergency stop	O
Saw Unit		K4 perform
75	Electrically driven scoring unit, motor power 1.0 HP (0.65 kW)	S
77	Variable rip capacity 49 ⁷ / ₃₂ " (1250 mm)	S
81	Swing away overhead saw guard	O
82	Dado capability for tooling up to ¾" (19.5 mm) width	O
88	Fine adjustment of the professional rip fence	O
-	Main saw blade Ø 9 ²⁷ / ₃₂ - 12 ¹³ / ₃₂ " (250–315 mm), saw blade rotation speed 4800 rpm	S
-	Saw/spindle moulder table	830 x 430 mm
-	Saw blade tilt 90°– 45°, max. cutting height 4 ¹ / ₁₆ " (103 mm)	S
Anodised sliding table		K4 perform
134	Format sliding table 125 ⁶³ / ₆₄ " (3200 mm), cutting length 125 ⁶³ / ₆₄ " (3200 mm), edging shoe*	S
Outrigger tables and crosscut fences		K4 perform
161	50 ²⁵ / ₃₂ " 1290 outrigger table	S
163	Mitre index system for the outrigger table (#160/161)	O
167	102 ²³ / ₆₄ " (2600 mm) crosscut fence for the 1290 outrigger table	S
169	102 ²³ / ₆₄ " (2600 mm) outrigger crosscut fence, system „X-Roll“	O
Weight		K4 perform
-	Weight kg (with standard configuration) net/gross	550/620 kg
Important accessories		K4 perform
221	Transport preparation for overseas transport	O
223	Heat treated pallet in accordance with IPPC regulations	O

Product range

Combination machines C3 31



Combination machines C3 41



Saw-Spindle-Shaper B3



Jointer-Planers A3



Circular Saws & Sliding Table Panel Saws K3, K4



F3 Spindle-Shaper



CNC Portal Milling Machines HNC



Edge sanders



Bandsaws



Air filter dust extractor



Hammer®

Hammer Affordable functionality and reliability

Since 1997 the Felder Group has been producing high quality yet affordable woodworking machines with the brand Hammer for do-it-yourselfers and small businesses. Robust, durable, space-saving and precise in its operation. Quality products that simply make woodworking fun.

FELDER GROUP

KR-Felder-Straße 1
A-6060 HALL in Tirol

☎ Tel. 05223 55306

www.hammer.us

[Contact](#)