

**MAYER®**



# Wood

**Beam saws**

The Mayer beam saw –  
as versatile as your challenges

# Quality & Reliability

## More than 70 years of experience

For over 70 years, MAYER has stood for the highest quality, precision and exceptional customer service. Our many years of experience in mechanical engineering guarantees quality, reliability and customer service.

It has always been our utmost concern to create a saw that is safe for both employees and the environment. Engines and energy sources will automatically turn off when they are not required and back on again when necessary. Extraction only happens where the chips accumulate. Thanks to the heavy, solid and low vibration design of our saws, the thin out sawing technology uses only minimum energy and conserves resources.

Hans Mayer

Kurt Mayer

Hansjörg Felder

Martin Felder



1950

Otto Mayer founded the company

1966

The first veneer cutting saws are built

1972

Soon followed by panel sizing saws

1982

Panel sizing saws become our main product

1996

We start with the construction of vacuum feed systems

2000

We develop angular systems for the chipboard industry

2006

We are building one of the largest cutting systems for aluminium panels

2010

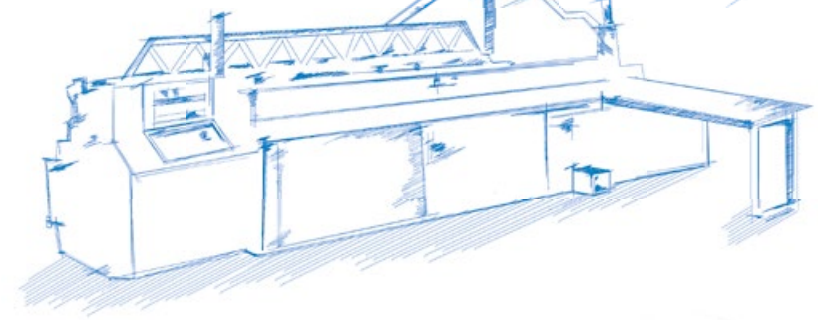
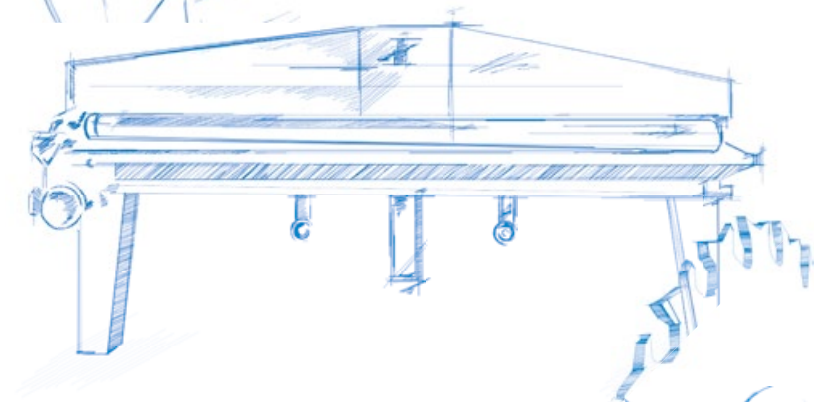
60 years company anniversary

2011

Our product range is extended by a high-performance MDF panel cutting machine

2019

Two strong companies, one common success story



MAYER







# around the world

## Mayer: worldwide quality and reliability

As part of the Felder Group, we are globally available to you. Our production plants in Hall in Tirol and Lombach produce quality machines day after day. More than 100,000 square meters of production space are used for processing a wide range of materials for use in trade, business and industry. Together we work on the development, marketing, and worldwide distribution of our high quality products.

Hundreds of specialist consultants in the approx. 270 sales and service centers in 84 countries configure customized product solutions tailored to customer needs after a targeted requirement analysis.

Subsequently, specially trained technicians carry out the delivery, installation, commissioning and the initial machine configurations. This ensures that your machine can be used productively from the very first day of use.

Through our worldwide customer service network, we ensure the short term availability of our service technicians as well as a smooth supply of spare parts. In addition, our customers benefit from individual inspection and maintenance packages and a competent service hotline for immediate assistance.

## What's the content?

kappa automatic 140	6-7
kappa automatic 120	8-9
kappa automatic 100	10-11
kappa automatic 80	12-13
A machine for every challenge	14-15
Software PC7000	16-19
More efficient	20-23
More extras	24-25
The world of Mayer saws	26-27



# kappa automatic 140

## The robust

### For the greatest challenges

The kappa automatic 140 offers outstanding precision with maximum performance and guarantees tear-free results. A saw motor of 24 KW power ensures fast and dimensionally accurate panel cutting. Power, speed and flexibility impress right away. Together with numerous approved Mayer-details, the kappa automatic 140 is the ultimate beam saw for woodworking.

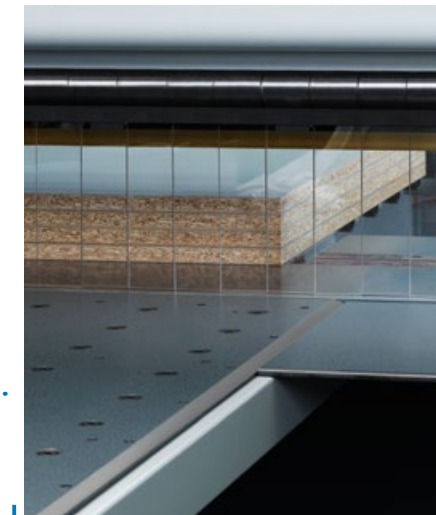
Cutting length: 125<sup>63</sup>/<sub>64</sub>" , 149<sup>39</sup>/<sub>64</sub>" , 169<sup>19</sup>/<sub>64</sub>" , 228<sup>11</sup>/<sub>32</sub>" (3200, 3800, 4300, 5800 mm)

Saw blade diameter: 19<sup>11</sup>/<sub>16</sub>" (500 mm)

Saw blade projection: 5<sup>15</sup>/<sub>32</sub>" (139 mm)

Feed speed: 16.5 ft- 328 ft (5-100 m/min.)

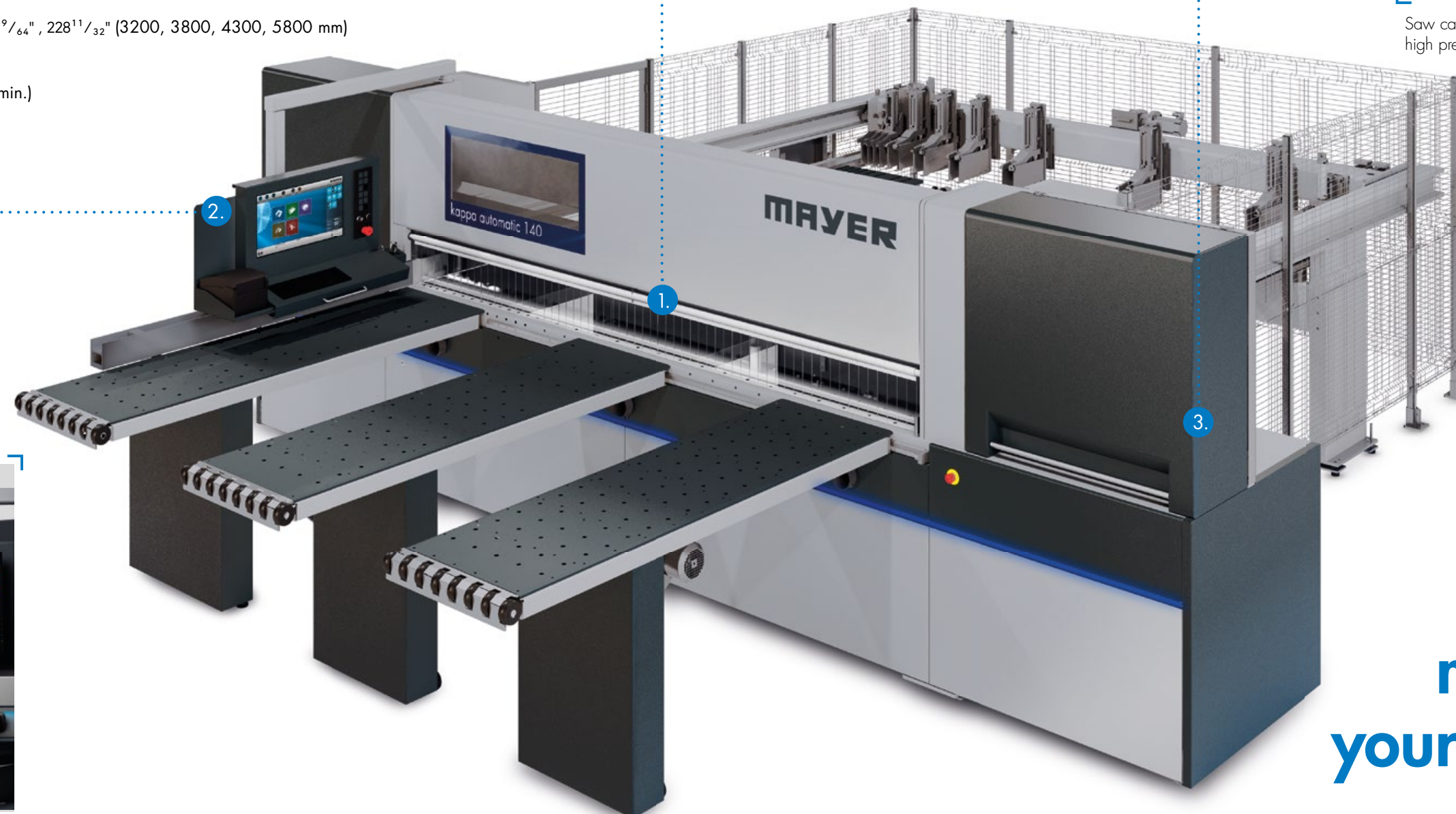
Motor power: 24 KW



Sturdy steel pressure beam with variable opening height.



Saw carriage with main and scoring unit, high precision and wear-free guiding system.



Intuitive and progressive control concept – easy, fast & reliable.

**maximize  
your working  
comfort**

# kappa automatic 120

## The powerful

### For individual applications

The sturdy machine frame and the 4<sup>1</sup>/<sub>64</sub>" (118 mm) saw blade projection guarantee high cutting performance with optimum cutting quality. Featuring all the characteristics of an outstanding beam saw and a variety of options for individual operations, the kappa automatic 120 is a top-notch machine with impressive quality and durability.

Cutting length: 125<sup>63</sup>/<sub>64</sub>" , 149<sup>39</sup>/<sub>64</sub>" , 169<sup>19</sup>/<sub>64</sub>" , 228<sup>11</sup>/<sub>32</sub>" (3200, 3800, 4300, 5800 mm)

Saw blade diameter: 15<sup>3</sup>/<sub>4</sub>" (400 mm)

Saw blade projection: 4<sup>1</sup>/<sub>64</sub>" (118 mm)

Feed speed: 16.5 ft-328 ft (5-100 m/min.)

Motor power: 18 KW



The solid air cushion tables facilitate the gentle processing of heavy panel workpieces.



Automatic trimming position – Enormous time savings through automatic panel size measurement.



Automatic cutting length adjustment with laser sensor detection.



# kappa automatic 100

## The all rounder

### Suitable for every application

The kappa automatic 100 – the top seller among wood beam saws with more power, performance and comfort. The solid and low vibration construction of the machine frame and the high precision linear guides guarantee optimum cutting results. The high equipment variation, the intuitive software and the ergonomic control panel complete the machine concept for the best operating comfort and maximum productivity.

Cutting length: 125<sup>63</sup>/<sub>64</sub>" , 149<sup>39</sup>/<sub>64</sub>" , 169<sup>19</sup>/<sub>64</sub>" (3200, 3800, 4300 mm)

Saw blade diameter: 13<sup>31</sup>/<sub>32</sub>" (355 mm)

Saw blade projection: 3<sup>47</sup>/<sub>64</sub>" (95 mm)

Feed speed: 16.5 ft- 328 ft (5–100 m/min.)

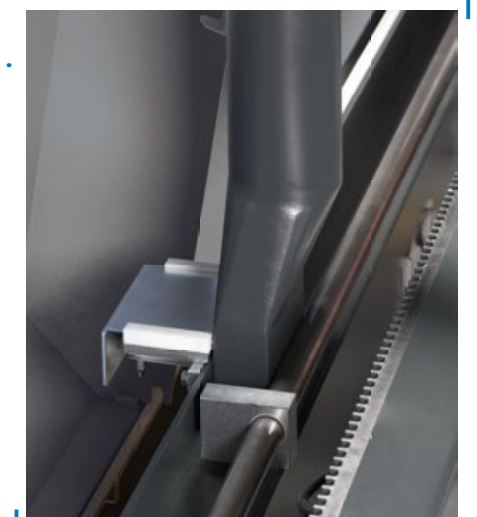
Motor power: 9 (13) KW



Double-finger Package clamp with variable pressure setting.



The solid steel angle fence guarantees absolute right-angled cuts.



Green Line – improved suction performance through slider control.

# kappa automatic 80

## The unique

### Concentrated expertise from years of experience

The kappa automatic 80 sets new standards in the compact class of horizontal panel saws. The solid construction and approved Mayer quality in reliability and robustness are safe investments in the future. The kappa automatic 80 has a 9 (13,5) KVV saw engine and cuts wood materials in all facets. Because of the low-vibration machine frame construction and the excellent saw carriage guide, the compact beam saw achieves excellent cutting results.

Cutting length:  $125\frac{63}{64}$ " ,  $149\frac{39}{64}$ " ,  $169\frac{19}{64}$ " (3200, 3800, 4300 mm)

Saw blade diameter:  $12\frac{19}{32}$ " (320 mm)

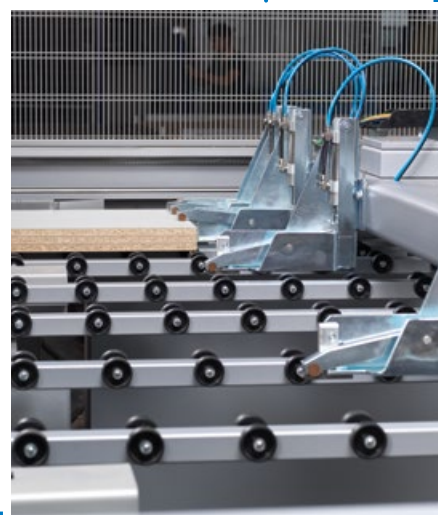
Saw blade projection:  $3\frac{1}{32}$ " (77 mm)

Feed speed: 16.5 ft-328 ft (5-100 m/min.)

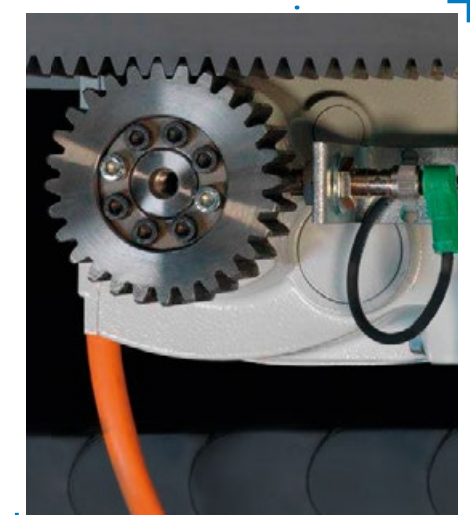
Motor power: 9 (13,5) KW



Angle pressing device for a gentle and precise alignment of the panels.



Strong package clamps – guarantee a secure hold even at high speeds.



Saw carriage with high precision drive via a gear and rack system.



# a machine for every challenge

## Perfection is in the detail

Each machine type stands for absolute excellence. The more diverse the requirement of the materials to be cut, the more paramount the small details become in determining the success of the entire process.

For our machine concepts, we have developed numerous detailed solutions that capture every challenge exactly in a nutshell. Whether cutting hard or soft board materials, honeycomb and lightweight construction materials, rolled or cast aluminum panels - we find exactly the right solution for our customers. Even for shaped tubes or round bars, we guarantee to have the right product.

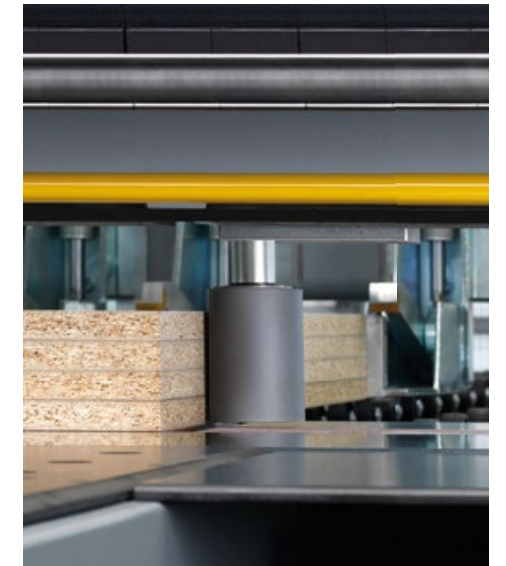
You can count on our state of the art technology, competence, innovative spirit and benefit from our many years of experience.



Material pusher with AC servo drive with independent measuring system for highest accuracy under the harshest conditions.



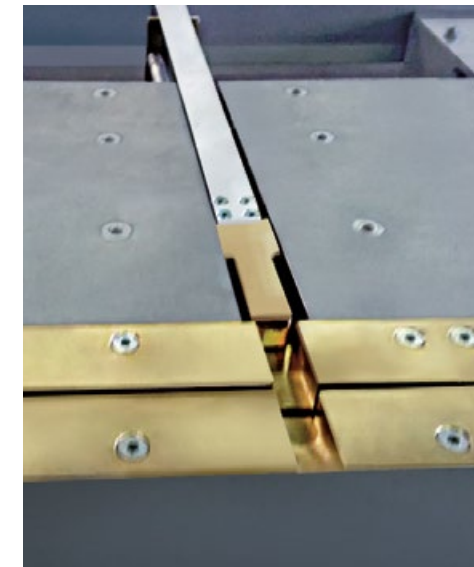
ProLock® EasyFix saw blade quick-change system guarantees the shortest setup times.



Double performance pressure unit – uncompromisingly precise positioning against the mitre fence.



Roller tracks on the rear support table for smooth panel handling to the cutting line.



Cutting gap closer for narrow trimming cuts.



Sophisticated saw carriage guides that minimize wear and tear ensure the perfect 90° cut every time, even after years of continuous industrial use.

**perfection**  
and highest  
**quality** in  
every detail



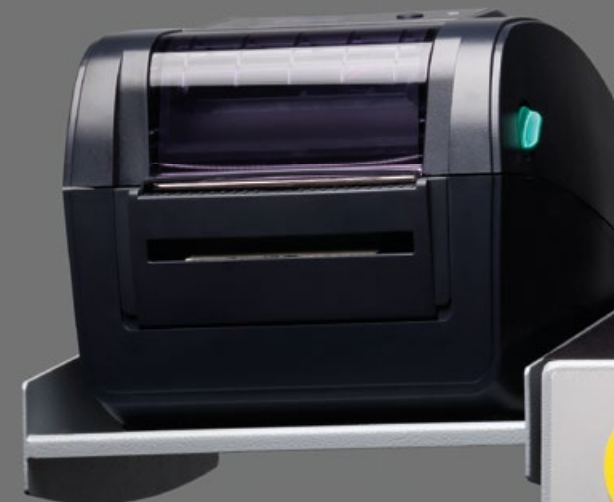
# software solutions

## PC7000

For technically demanding projects but also in daily operations, intuitive and intelligent software solutions guarantee the efficiency and productivity of the entire production process.

The PC7000 is the software for panel cutting. With user-friendly control, both single cuts and complex cutting plans, can be processed quickly and easily. Animated pictures and specific operating instructions during the work process ensure easy and safe operation of the machine at all times. With the individually configurable parameter list, the machine can be adapted exactly to the specific machining strategies.

The ergonomic control panel displays all controls in a clear and organized manner. In the software, all symbols are color coded for optional operation in touchscreen mode. The 24-inch widescreen monitor clearly displays all information, cutting plans and control messages. Machine data, maintenance instructions and error diagnosis elements can be called up in the status menu and the online connection ensures maximum machine availability. The controller is also prepared for connecting a label printer.







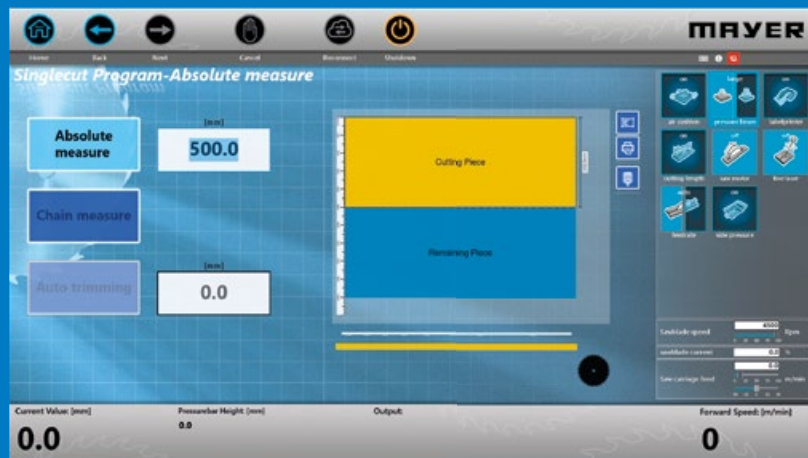
### Manual programs

The manually controlled program sequences provide the operator with a quick introduction to machine operation. The operator can set up and execute a processing sequence with only a few input steps by dividing the software into a single, strip, layered or dimension-cut program.



### Strip cutting program

The entering of parameters is clearly and visually supported. The remaining quantities are calculated immediately and offset in color. For periodic adaptations the created cutting plans can be saved.



### Single cut program

Arranged, the operator selects the desired manual cutting option and receives graphic feedback about the calculated machining result immediately after the entry. No matter if absolute dimensions or chain dimensions – chain dimensions, the machine is prepared for cutting after a few clicks.

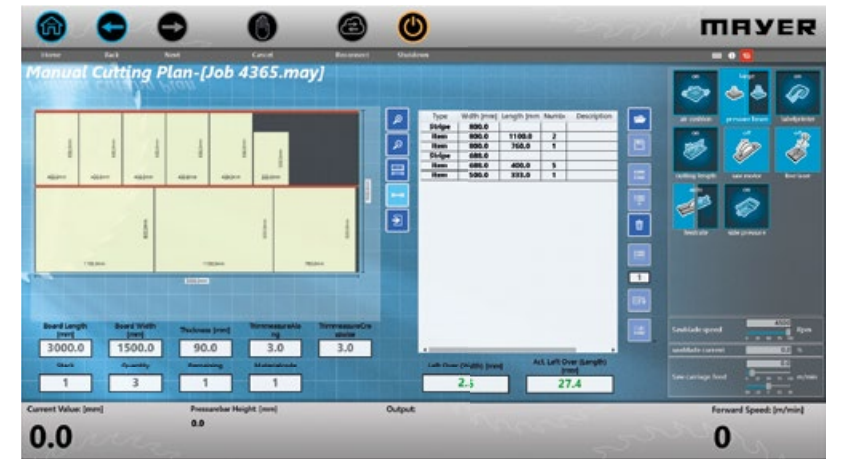


### Individual parameters

Every company has its own processing strategy. A parameter list is available to the operator for individual production processes in which the processing strategy can be changed quickly and easily depending on the material.

### Prompt cutting plans

Simple cutting plans do not need cut optimization. With the help of the software, the operator can act quickly and configures his cutting plan directly on the machine. All necessary information about the cutting result is immediately displayed. For recurring processing, the operator saves the cutting plan directly in the machine database.



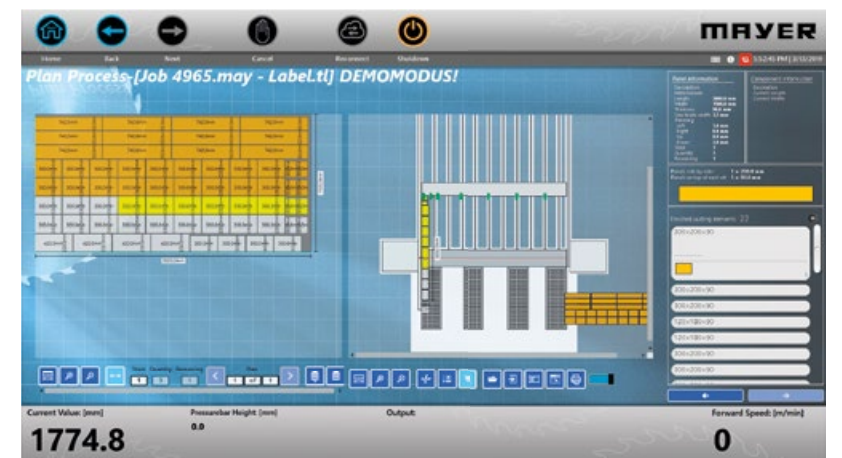
### Carry out cutting plans

Saved cutting plans are accessed and executed in the command center. Continuous graphics guide the operator through the cutting plans. All feedback from the controller and information about the processed components are displayed on the 24" widescreen monitor. The cutting plans to be processed can be checked in advance through adaptive simulations. This allows the source of errors to be eliminated almost entirely.



### Complex projects

Each project has its unique challenges. The command center's interactive feedback helps keep track of complex cutting plans. The label information is immediately linked to the component and identifies it for further process steps.



### Service & Diagnosis

Visual feedback about machine data, simple machine maintenance and optical troubleshooting with the possibility of a secure online connection ensure maximum machine availability. Efficiency and performance guarantee maximum productivity.





# more efficient

## Lifting tables

### Feeding uncompromisingly fast and precise package push off

This type of loading is particularly suitable for processing large quantities of the same types of panels and plays a central role right here. These include, among other things, the electronic height control system with precision measuring system, buffer tracks for feeding several raw material stacks and independent processing, smart handling technologies and hybrid control of the saw and lifting table. A variety of options such as aligners, turntables and many more accompanies everything.

#### Lifting table "Easylift"

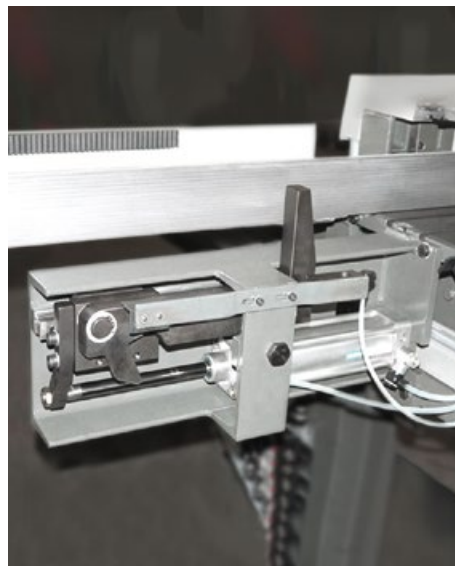
Sheet dimension:  $125^{63}/_{64}$ ",  $149^{39}/_{64}$ ",  $169^{19}/_{64}$ "  
(3200 mm, 3800 mm, 4300 mm)  
max. panel stack height:  $25^{19}/_{32}$ " (650 mm)  
min. panel thickness: 12 mm

#### Lifting table "Profilift"

Sheet dimensions:  $125^{63}/_{64}$ ",  $149^{39}/_{64}$ ",  $169^{19}/_{64}$ ",  $228^{11}/_{32}$ "  
(3200 mm, 3800 mm, 4300 mm, 5800 mm)  
max. panel stack height:  $25^{19}/_{32}$ " (650 mm)  
min. panel thickness: 8 (3,2) mm



Unloading unit



Stack organiser



Roller tracks

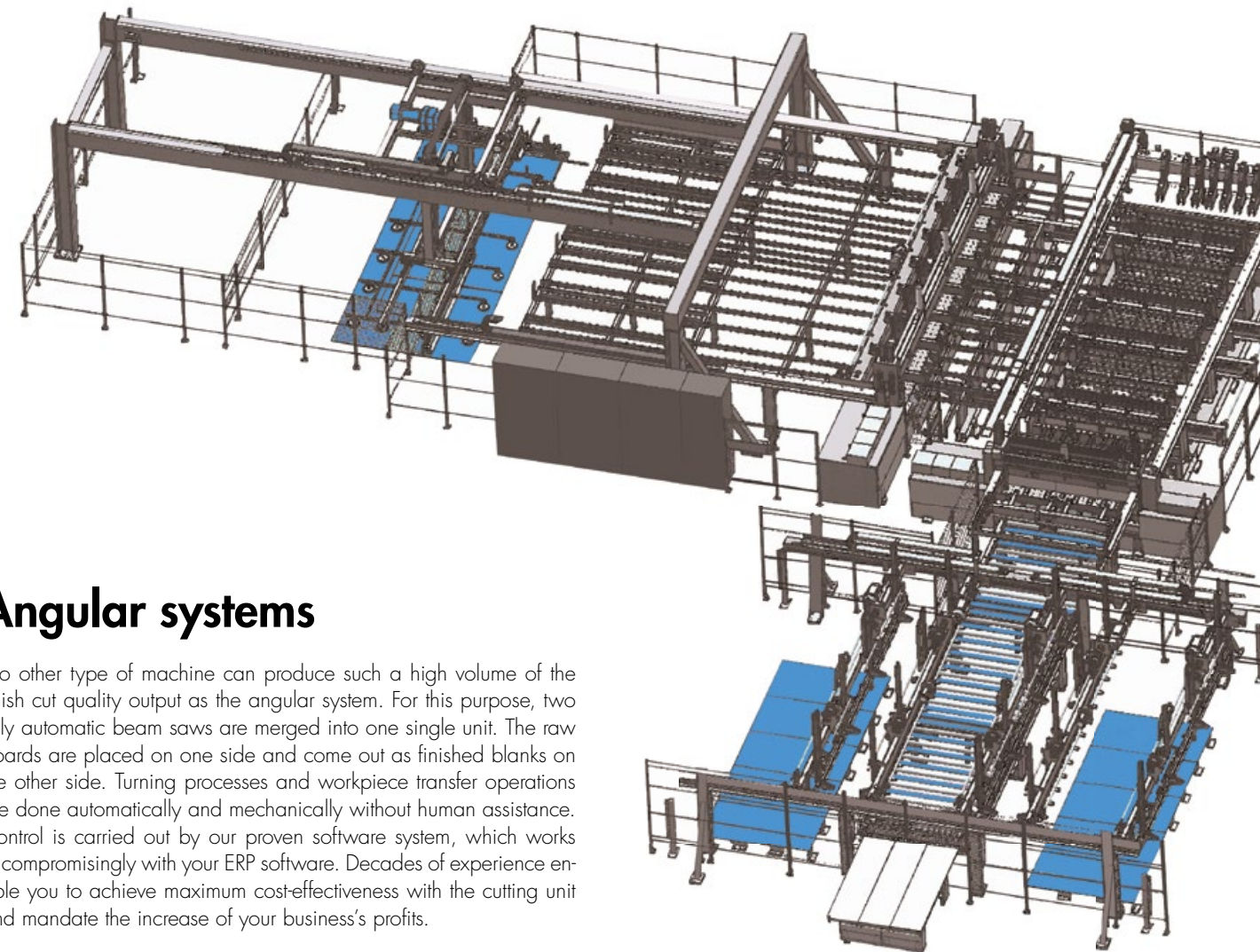
## Angular systems

No other type of machine can produce such a high volume of the finish cut quality output as the angular system. For this purpose, two fully automatic beam saws are merged into one single unit. The raw boards are placed on one side and come out as finished blanks on the other side. Turning processes and workpiece transfer operations are done automatically and mechanically without human assistance. Control is carried out by our proven software system, which works uncompromisingly with your ERP software. Decades of experience enable you to achieve maximum cost-effectiveness with the cutting unit and mandate the increase of your business's profits.

Cutting length of the longitudinal saw:  $125^{63}/_{64}$  -  $354^{21}/_{64}$ " (3200-9000 mm)  
Cutting length of the crosscut saw:  $47^{1}/_{4}$  -  $125^{63}/_{64}$ " (1200-3200 mm)  
Motor power: 18-75 KW  
Saw blade diameter:  $17^{23}/_{32}$  -  $33^{55}/_{64}$ " (450-860 mm)  
Cutting height:  $4^{23}/_{32}$  -  $10^{15}/_{64}$ " (120-260 mm)

#### Mayer angular systems stand for:

- Precise, reliable process control results in maximum cutting capacity.
- Maximum availability through high-quality German engineering.
- Finished cut quality and maximum availability thanks to the latest sawing technology in heavy industrial design.
- Concepts for every performance range with package heights up to  $10^{15}/_{64}$ " (260 mm) and sawing capacities up to 75 KW.
- Latest control technology with standard components and open systems.
- Adapted handling equipment for all panel products.
- Each system is tailored to our customers and their requirements.





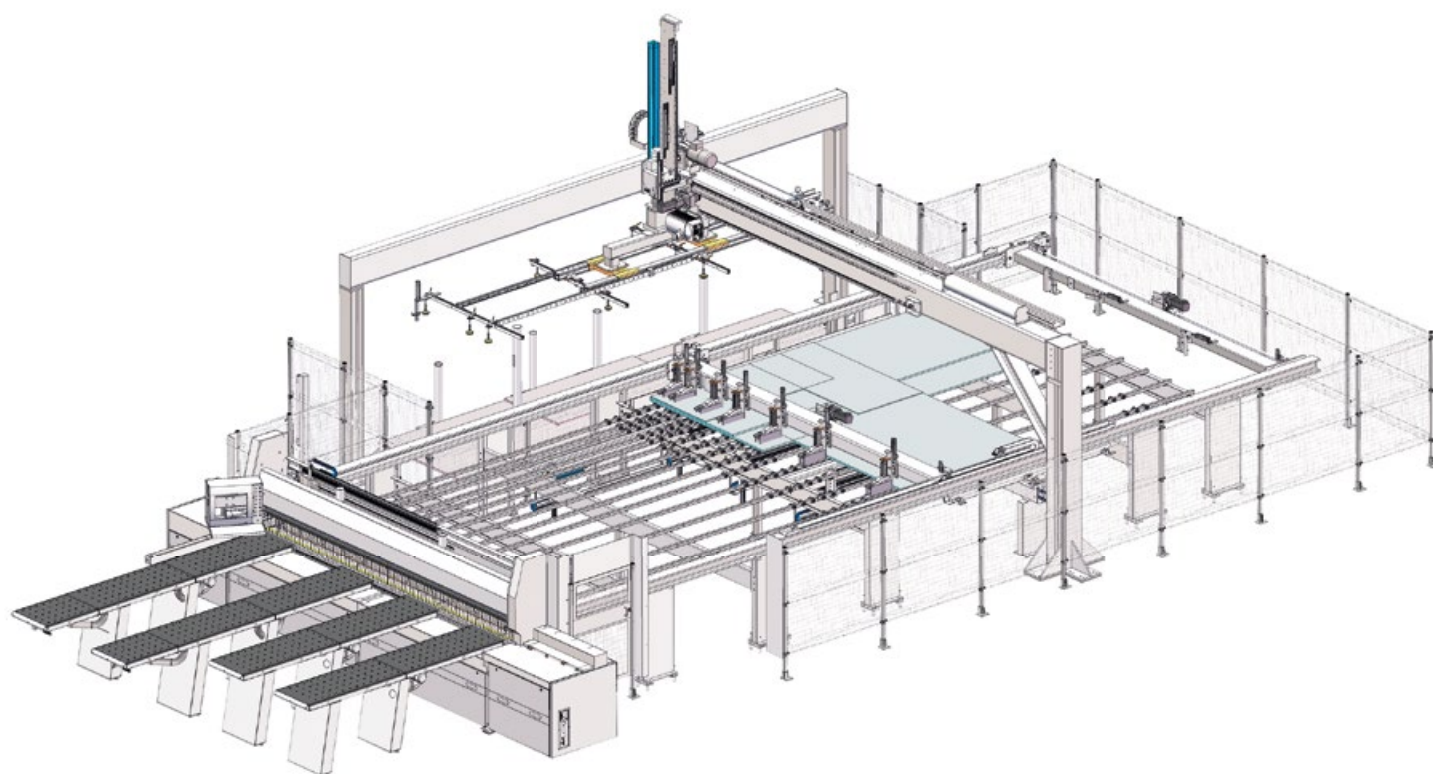
# more efficient

## Vacuum feed with line gate

The great advantage of this system is the ability to flexibly feed different types of panels without human assistance. While on a lifting table only one type of panel can be processed the line gate processes several raw panel stacks simultaneously. Depending on the requirements for processing different panels, we design your system with several storage areas.

### The advantages at a glance

- For cutting or nesting machines - or for both at once.
- Scalable feeding solution with line gate and a flexible number of storage locations for the forklift – depending on the space available and the capacity requirements of your cutting unit.
- Maximize the capacity of your cutting machine by integrating a pre-stacking table.
- Optional slewing gear in the loading unit.
- Variable panel dimensions.



kappa automatic 80

no scratching &  
no shifting –  
simple, fast  
and safe



A close-up, low-angle shot of a large industrial machine, likely a beam saw, with a vertical blade and various mechanical components. The lighting is dramatic, highlighting the metallic surfaces and the blade.

more  
extras

## Additional services to meet individual needs

Our biggest concern is the individual optimization of your production process. No matter the challenge, we create customized production solutions – flexible, innovative and “Made in Germany.”

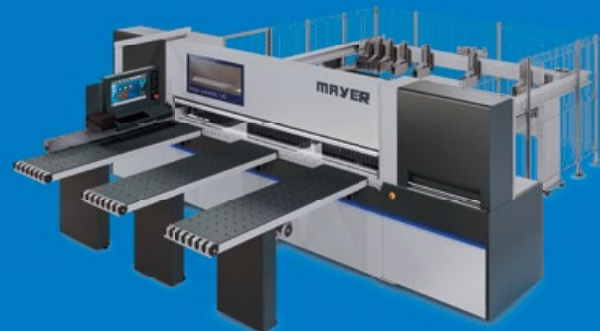
- Optimization programs
- Electronic storage system
- Area storage
- High bay racking
- Stacking system
- Extraction systems

## Production program

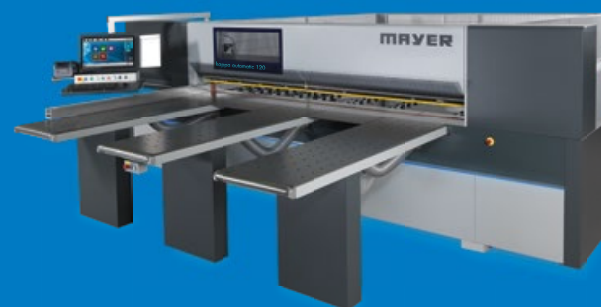
- Beam saws for wood, plastic, non-ferrous metals, composites, gypsum and cement fibreboard
- Feed systems for beam saws (lifting table, vacuum feed)
- Fully automatic angular systems
- Custom solutions for panel sizing

special  
solutions for  
special  
challenges

# the world of mayer saws



**kappa automatic 140**  
wood & plastic



**kappa automatic 120**  
wood & plastic



**kappa automatic 100**  
wood & plastic



**kappa automatic 80**  
wood

## Our machines – your success

We want to give you the perfect tool for your success story. For more than 70 years, we have been working towards this goal, creating unique beam saws with passion, tradition, and innovation that can handle every material and challenge.



**advanced line 250**  
aluminum & plastic



**advanced line 200**  
aluminum & plastic



**advanced line 160**  
aluminum & plastic



**advanced line 130**  
aluminum & plastic



**advanced line 100**  
aluminum & plastic

a world full  
of choices and  
possibilities





MEMBER OF FELDER GROUP

#### FELDER GROUP

KR-Felder-Straße 1  
A-6060 HALL in Tirol

🇬🇧 Tel. 01908 635000  
[www.mayer.uk](http://www.mayer.uk)  
[Kontakt](#)

🇮🇪 Tel. 0906625756  
[www.mayer.ie](http://www.mayer.ie)  
[Kontakt](#)

🇩🇪 Tel. 1800 274 3040  
[www.mayer.in](http://www.mayer.in)  
[Kontakt](#)

🌐 Tel. +43 5223 58500  
[www.mayer.int](http://www.mayer.int)  
[Kontakt](#)

*Follow us on Facebook,  
Instagram, LinkedIn and Youtube.*