

FORMAT 4®

exact 63

24 ⁵¹/₆₄"

PLANING WIDTH
MEETS EVERY
REQUIREMENT

FORMAT 4®



exact 63

24 ⁵¹/₆₄" planing width meets every requirement!



Solid wood



Whether in a carpenter's workshop, in workshops where solid wood is machined, or in the field of modern furniture production – the performance of the new Format4 exact 63 jointer is astounding in all areas. Maximum performance, simple operation and individual machine options, all available at a low investment cost, **guarantee perfect planing results for every requirement.**

The Format4 jointer exact 63 offers a choice of 4 different cutting systems:

- » 4 knife Format System cutter-block
- » 4 knife TERSA cutter-block
- » Silent-Power® Spiral cutterblock



exact 63

- » Planing width: 20 ⁵/₆₄"
- » Cutterblock: self-aligning planer knives; Silent-Power® Spiral Blade Cutterblock (optional)
- » Jointing table length: 41 ¹¹/₃₂" (64 ⁶¹/₆₄)
- » Max. depth of cut: ²⁵/₆₄"
- » Jointing height ¹/₈ - 11 ¹³/₁₆"
- » Variable feed speed adjustment 5–20 m/min

FORMAT4 Premium Machines for Premium Requirements

- | | |
|--|---|
| » Constantly high performance in industrial continuous operation | » Quality and precision from AUSTRIA |
| » Customer specific optimized production solutions | » Uncompromising productivity |
| » Solid design with premium components | » Perfect service package before, during and after the purchase |
| » Wide range of configuration packages with high-tech solutions | » Tailor made financing solutions |
| » Complete engineering precision | » Mechanical engineering experience since 1956 |
| » Premium user comfort | |

The most important highlights at a glance



Silent-Power®

Exclusive for jointer/planers from the Felder Group. The Silent-Power® spiral blade cutterblock cuts noise levels during planing by well over half and provides a continuous pulling cut for tear-free planing patterns in any type of wood. With this revolutionary new development from Format4 you are obtaining all of the advantages of a spiral blade cutterblock at considerably lower operating, investment and adjustment costs. The benefits of the Silent-Power® spiral blade cutterblock at a glance:

- » Sensationally quiet, noise is reduced by 50%!
- » Blade life up to 20 times longer
- » Four highly precise cutting edges on each knife
- » Optimized chip extraction and reduced chip volume
- » Tear-free planing results
- » Reduced power consumption when compared to similar systems



"Digi-Drive"

Enter the thickness required, press Start and the jointing bed adjusts exactly to the desired position. LED displays for the required and actual values. Additional functions: incremental adjustment, 4 programmable jointing table positions.



Feeder device

Variable feed speed of between 5–20 m/min. Whether its a perfect finish or quick thickness calibration that is required, the correct feed speed can always be set to match.

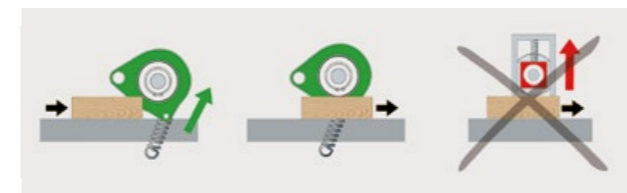
FORMAT 4®

Details



Change the blades in record time

4-knife system cutterblock, knife change in less than two minutes, self-aligning knives resulting in high accuracy when changing blades, no resin build-up on clamping screws. Positive locking ensures ultra-smooth operation, maximum blade life, savings thanks to economical blade price.



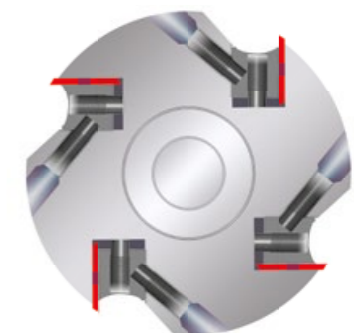
Infeed rollers

The infeed rollers are suspended which allows them to lift gently when processing with a large depth of cut.



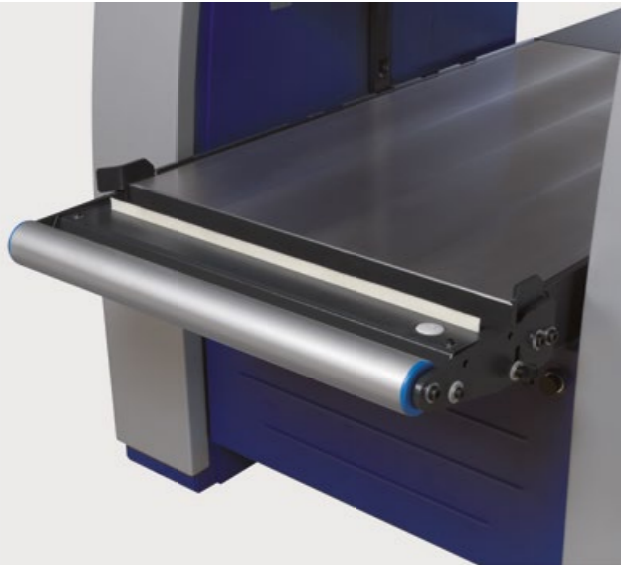
Power-Drive

Turn knob for quick adjustments, push button for fine adjustments. The LED display shows the actual values.



Thickness planing with 4-knife system cutterblock

The jointer equipped with the Format4 system cutterblock, a 4 ²³/₃₂" cutting circle and 4 blades, offers performance, precision and operating comfort all in one.



Support roller

For those customers that regularly process wet or resinous wood, we would recommend the option of the workpiece roller and lubrication unit on the infeed side of the machine.

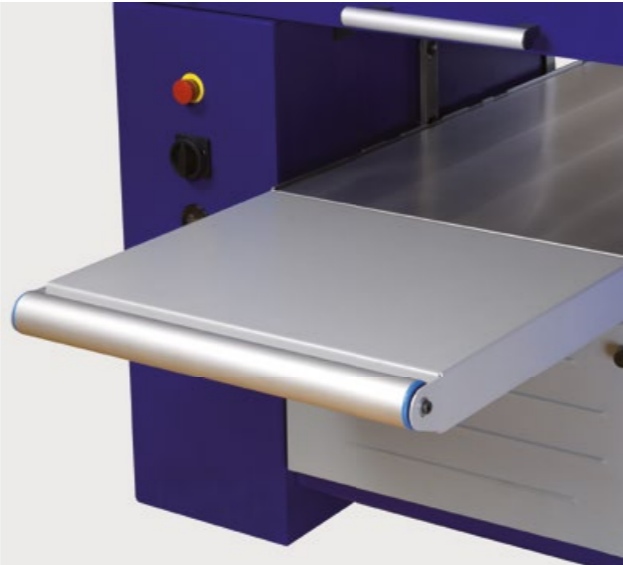
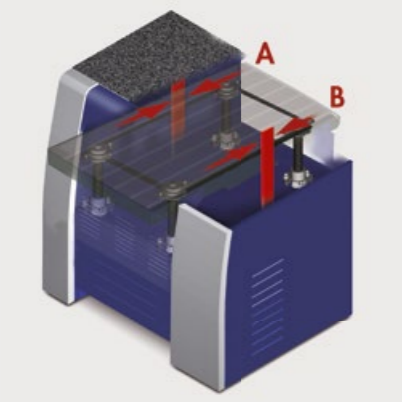


Table extension

Increased comfort: Stable table extensions with workpiece roller on the outfeed side.



Outstanding stability and long-lasting precision

Four trapezoidal support spindles ensure utmost precision and high load bearing capacity. Vertical guides integrated into the side of the machine chassis absorb the resulting outfeed side pressure and guide the jointing table into position with an accuracy of a tenth of a millimeter



Adjustable integrated bed rollers

Optional integrated adjustable bed rollers are available for processing workpieces with high resin or moisture content.



Scissor lifting table

On request, the jointing table can be extended by 45 9/32" with a scissor lifting table.

Technical specifications

Electrics		exact 63
001	3x 400 V motor voltage	S
002	3x 230 V motor voltage	W
004	50 Hz motor frequency	S
005	60 Hz motor frequency	W
007	7.35 kW motor (10 HP) S6/40%	S
008	10 kW motor (13.5 HP) S6/40%	O
009	15 kW motor (20 HP) S6/40% (#001)	O
10	Star-delta start	S
12	Potential free contact	O
13	Timer for operating hours	O

Cutterblock		
39	4-knife system cutterblock (blade length 25")	S
41	4-knife TERSA/MBM system cutterblock (blade length 25")	O
44	Silent-Power spiral cutterblock	O
-	5,000 rpm rotation speed	S
-	Number of knives – Silent-POWER spiral cutterblock	95
-	Cutterblock diameter in mm	120

Jointer and feed gears		
211	24 51/64" jointer table workpiece roller on the infeed side (I58)	O
53	Electric height adjustment for jointing table ("Power-Drive" D1)	S
55	Electronic digital display for the jointing table adjustment	S
57	Variable speed 5–20 m/min	S
58	Automatic lubricant application at the infeed of the jointing table with workpiece roller on the infeed side	O
59	2 adjustable rollers under the jointing table, adjustment range 0–0.5 mm	O
60	Option to preselect "Digi-Drive" D1 dimensions for position control of the jointer table height	O
61	Rubber infeed roller Ø 3 11/32" (#63)	O
62	Steel segmented infeed roller, spiral toothed	O
63	Rubber outfeed roller Ø 3 11/32"	O
64	Second steel outfeed roller, micro teeth Ø 3 11/32" (I63)	O
65	Second rubber coated outfeed roller Ø 3 11/32" (#63)	O
-	Steel outfeed roller, micro teeth Ø 3 11/32"	S
-	Jointing width in mm	630
-	Min.-max. jointing height in mm	3–300
-	Jointing table size in mm	630 X 1,050
-	Steel segmented infeed roller, spiral toothed Ø 3 11/32"	S
-	Spring-loaded pressure bar on the outfeed	S
-	Segmented pressure beam at the infeed	S
-	Min. workpiece length in mm	270
-	Maximum depth of cut in mm	10

Important accessories		exact 63
223	(2x 440-104) – Coupling system for table extension with F-coupling (on the outfeed side)	○
224	Table extension with workpiece roller for the jointer table (24 ⁵¹ / ₆₄ x 22 ⁷ / ₁₆ "	○
225	The scissor lifting table to be mounted on the jointer table	○
General		
-	Extraction connection Ø in mm (mountable left or right)	160
-	Weight kg (with standard configuration)	1.050
Packaging		
222	IPPC packaging	○
Transport		
221	Container packaging	○

Product range

Sliding Table
Panel Saws



Shapers



Planer



Edgebanders



Wide Belt
Sanding
Machines



Heated Veneer Presses

HVP heated veneer press
With Elkom® electric heating platens
with warm water heating
with thermal oil heating
connection to an existing heating system

CNC
machining
centers



Nesting-CNC
Machining
centers



Industrial
Panel
Saws



Vacuum panel lifter
Return systems
Feeding Units



FORMAT 4®

FORMAT4 Uncompromising expertise for the highest of requirements

The Felder Group premium brand has met the highest standards of professional users since 2001. The customized high-performance solutions are uncompromisingly innovative, offer maximum operating comfort and complete productivity.

FELDER GROUP

KR-Felder-Straße 1
A-6060 HALL in Tirol

☎ Tel. 05223 55306

www.format-4.us

[Contact](#)