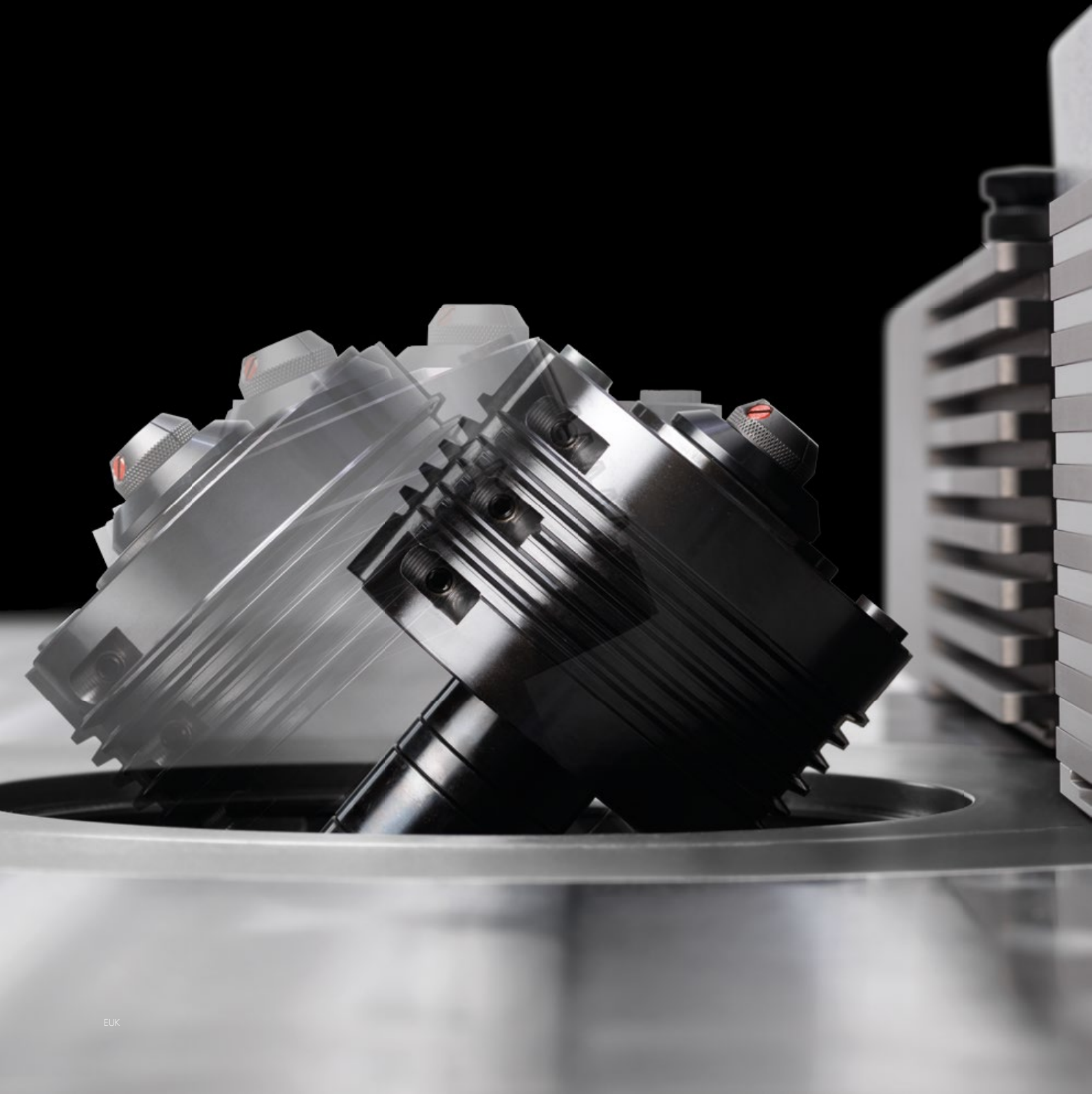


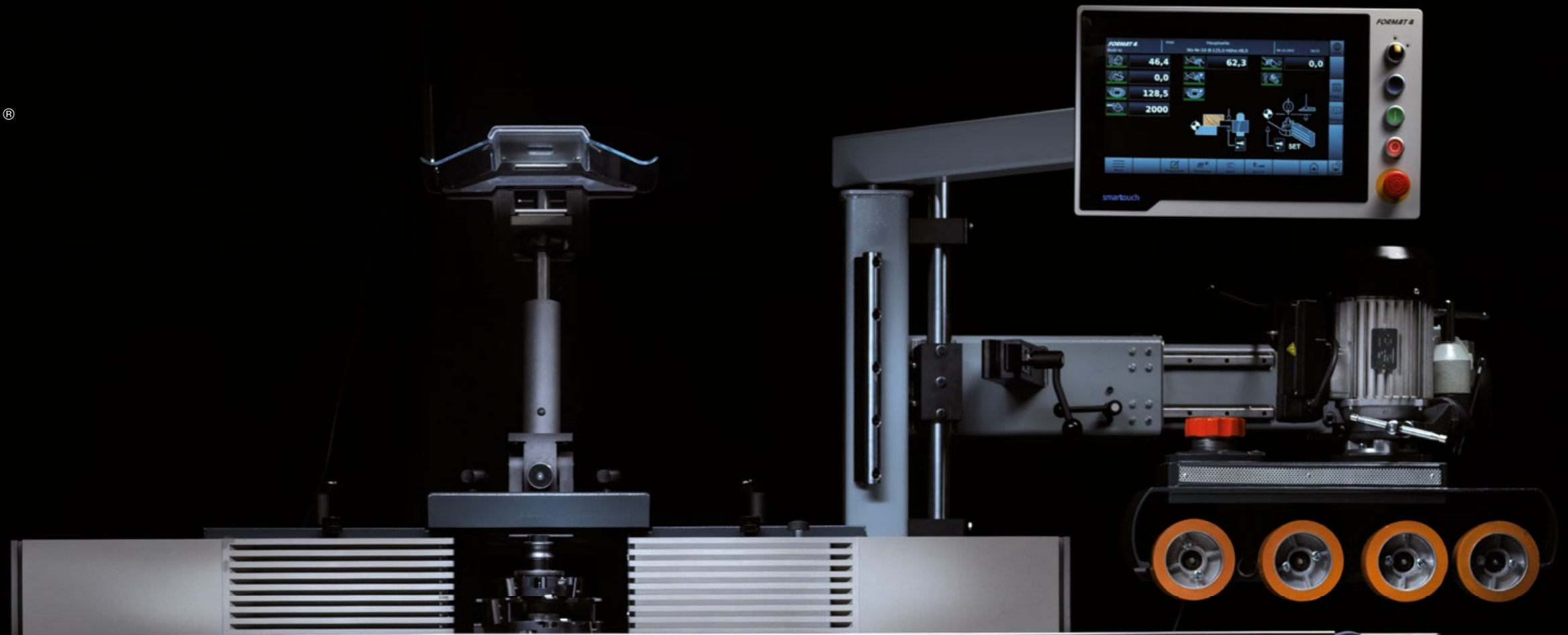
***FORMAT 4***®

**profil 92 M e-motion**

SET-UP TIMES ARE A  
THING OF THE PAST



**FORMAT 4**®

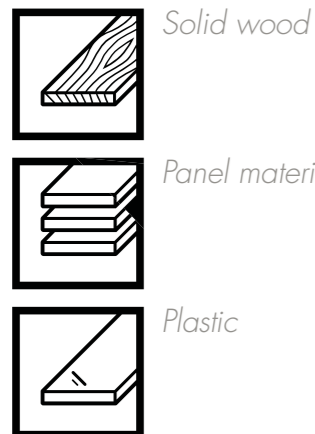


profil 92 M

**FORMAT 4**

# profil 92 M e-motion

## Set-up times are a thing of the past



The new profil 92 M spindle moulder is the Format4 premium model providing maximum ease of use and ensuring absolute efficiency thanks to the shortest possible set-up times during milling operations. The sophisticated electro-spindle is equipped with an HSK 63F interface for automatic tool quick-change system with pneumatic clamping. The tilting range of +/- 46 degrees allows unlimited processing possibilities. The rotation speed, spindle height and angle, as well as the spindle fence and even the table opening can be adjusted intuitively and precisely with the self-explanatory e-motion control from the 15" touchscreen control panel. The memory for tools, spindles and mortising programs enable perfect repeatability and short set-up times.

Controlled, eccentric inserts ensure maximum table supporting surface and considerably reduce the setting effort especially when tilting the spindle. The newly developed heavy-duty precision spindle moulder fence has two controlled axes for precise depth adjustment of the entire stop and in addition, an independent depth positioning of the right-hand, feeding jaw. Furthermore, the fence can be completely swivelled away from the work area for convenient access during curved moulding operations. Optionally, the Format4 profil 92 M can also be equipped with an electrically height-adjustable power feeder.



### profil 92 M e-motion

- » Electro-spindle with variable speed and HSK 63F interface
- » Double pivoting 2 x 46°
- » Swing-away fence stop with two controlled axes
- » HSK 63 quick-change tool system
- » Table opening with controlled, eccentric insert rings
- » Intuitive e-motion control for moulder spindle, fence stop and table opening



### profil 92 M e-motion

- » Electro-spindle with variable speed and HSK 63F interface
- » Double pivoting 2 x 46°
- » Swing-away fence stop with two controlled axes
- » „Integral“ safety bar guides 650 mm
- » 670 mm table extension on both sides with 2200 mm extendable frame
- » Electrical height-adjustable feed support incl. horizontal tube
- » HSK 63 quick-change tool system
- » Table opening with controlled, eccentric insert rings
- » Intuitive e-motion control for moulder spindle, fence stop and table opening

## FORMAT4 Premium Machines for Premium Requirements

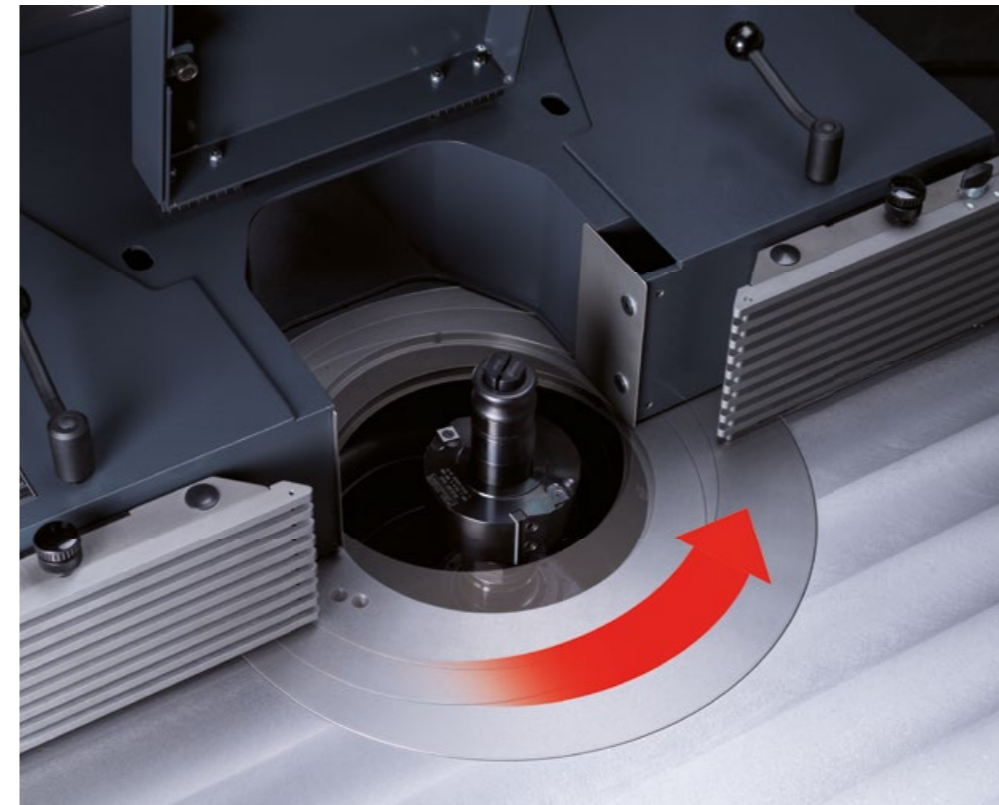
- » Constantly high performance in industrial continuous operation
- » Customer specific optimised production solutions
- » Solid design with premium components
- » Wide range of configuration packages with high-tech solutions
- » Complete engineering precision
- » Premium user comfort
- » Quality and precision from AUSTRIA
- » Uncompromised productivity
- » Perfect service package before, during and after the purchase
- » Tailor made financing solutions
- » Experience in machine construction since 1956

# The most important highlights at a glance



## Intuitive e-motion control for moulder spindle, fence stop and table opening

The rotation speed, spindle height and angle, as well as the spindle fence and even the table opening can be adjusted intuitively and precisely with the self-explanatory e-motion control from the 15" touchscreen control panel. The memory for tools, spindles and mortising programs enable perfect repeatability and short set-up times.



**255 mm table opening with controlled, eccentric insert rings**  
Controlled, eccentric inserts ensure maximum table supporting surface and considerably reduce the setting effort especially when tilting the spindle. With the eccentric insert rings, the table opening can be perfectly adapted to the tool without having to add or remove the insert rings.

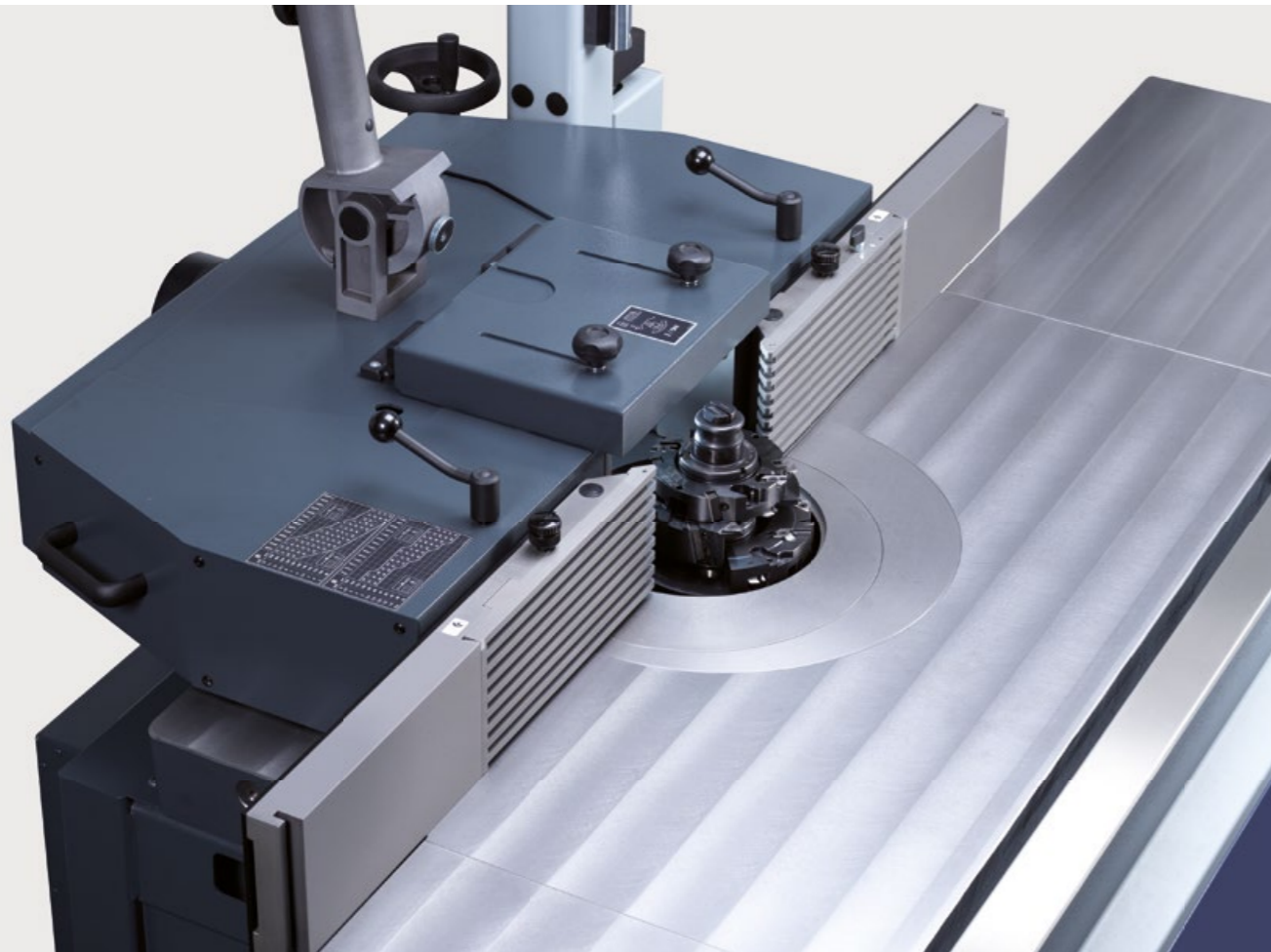


**The tilting range of +/- 46 degrees allows unlimited processing possibilities.**

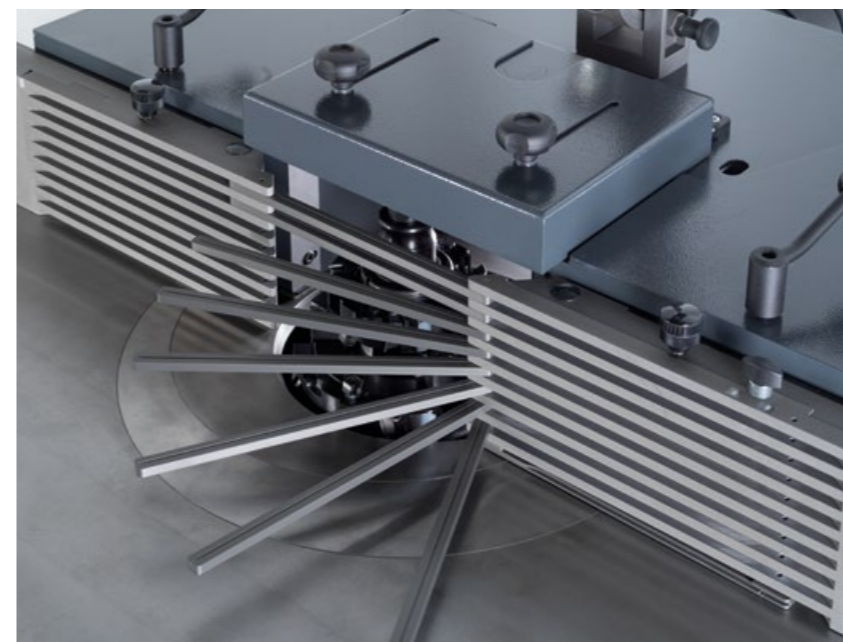
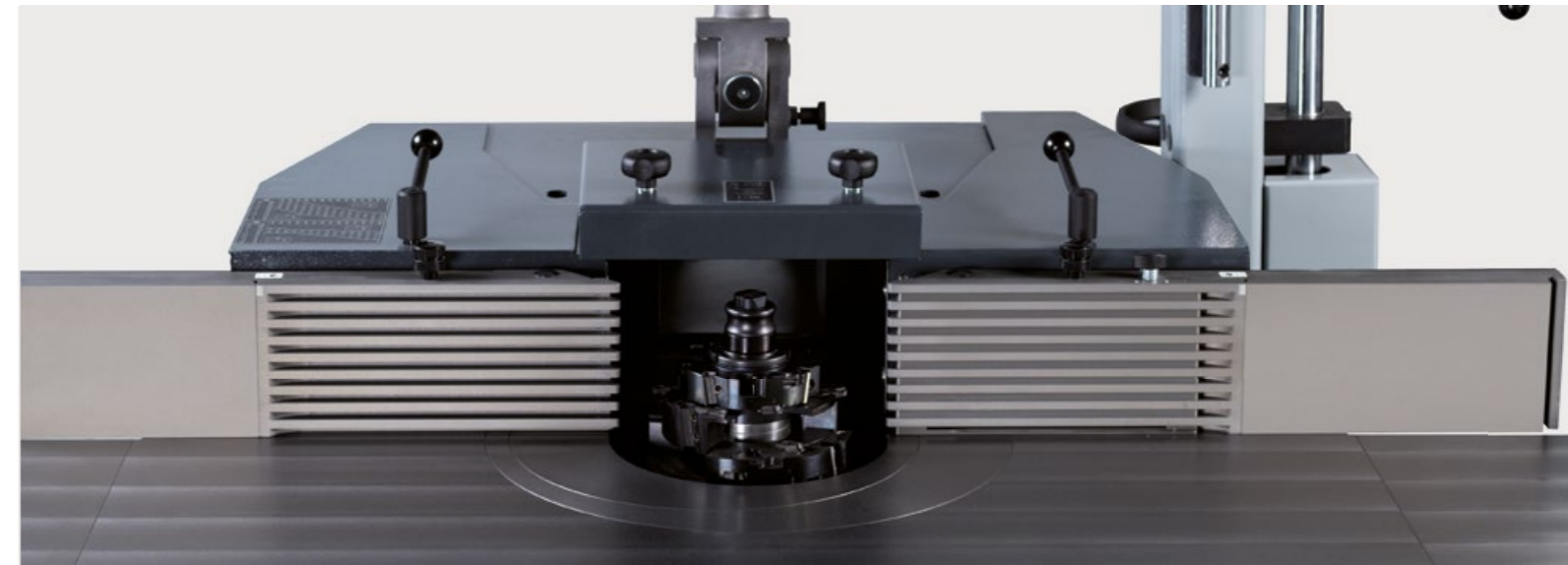


## HSK 63F interface

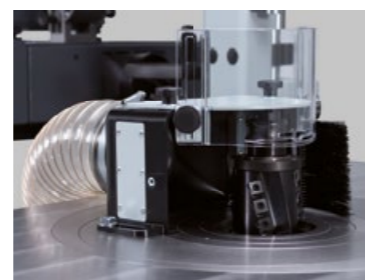
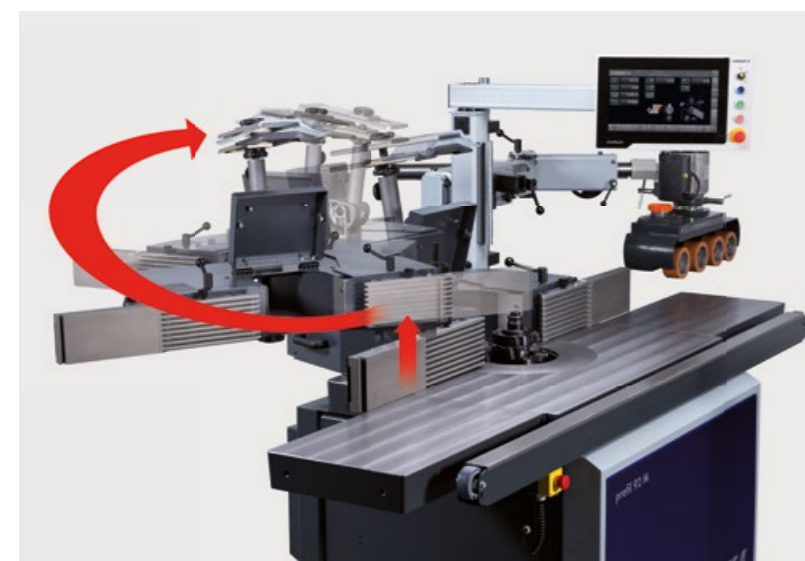
The sophisticated electro-spindle is equipped with an HSK 63F interface for automatic tool quick-change system with pneumatic clamping.



**Precision spindle moulder fence „250“ with two controlled axes**  
 Self-explanatory e-motion control on the 15" touchscreen is used to set the depth of cut and, depending on the type of milling work, the position of the fence. The heavy Format4 precision moulder fence is positioned electrically to the set values without the need for additional manual clamping.



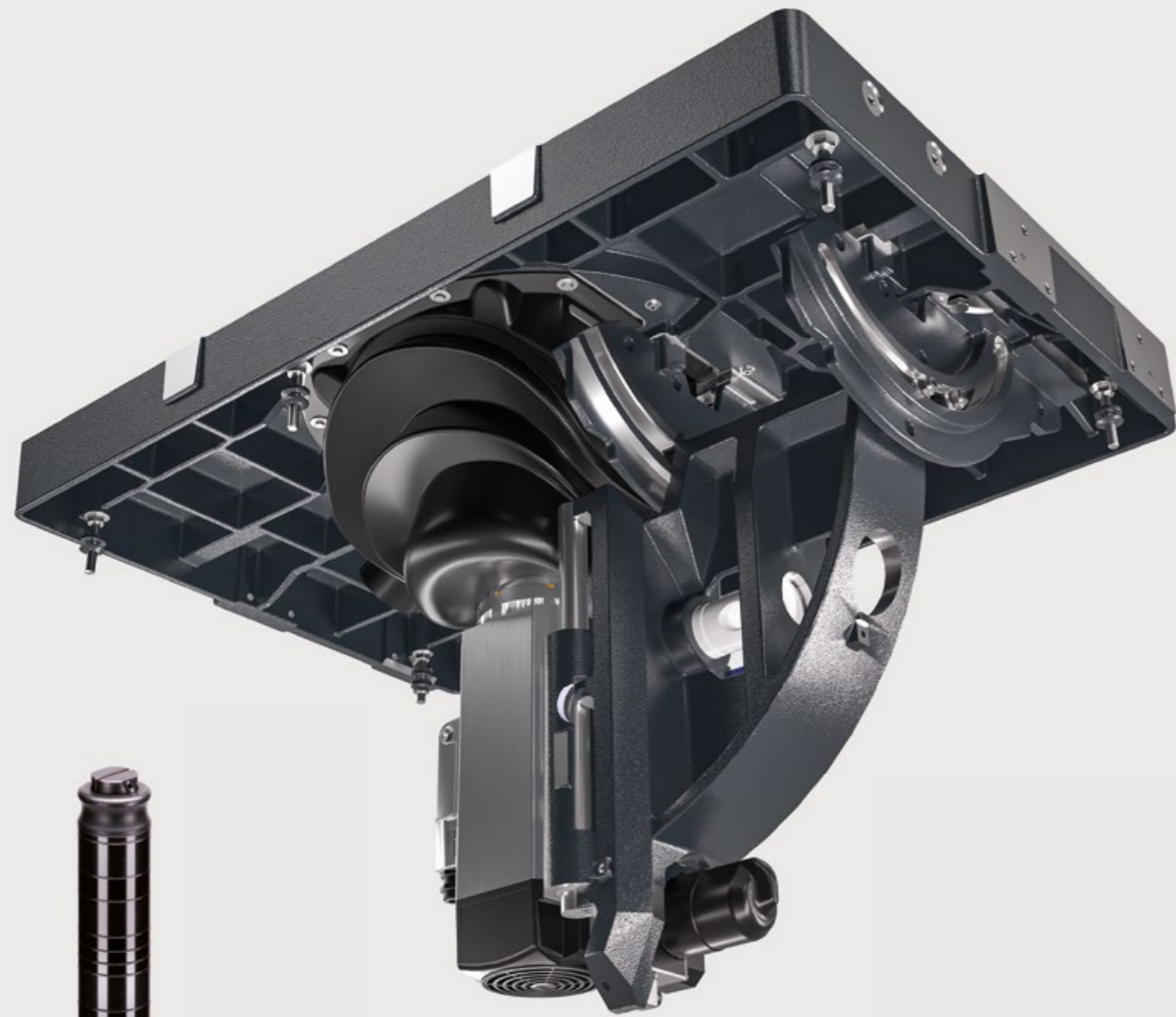
**Improved safety**  
 The Integral spindle moulder safety fence offers even more protection through continuous and quickly positioned fence plates. Option



**For curved moulding work**  
 The fence can be completely swivelled away from the work area.



**Centrex spindle moulder guard**  
 The high-quality, flexibly adjustable Centrex moulder guard, which presses the workpiece against the moulding table and fence, ensures safety and comfort during manual milling work. When using a power feeder, the Centrex moulder guard is simply moved out of the working area.



**High-precision milling table**

The heavy, solidly ribbed milling table made of grey cast iron guarantees maximum precision and stability.

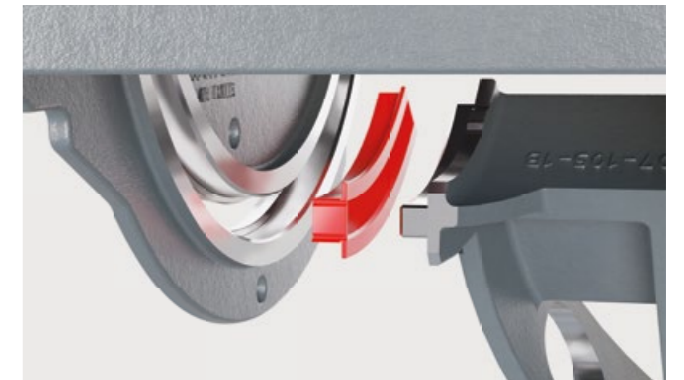
**The profil 92 spindle shaper unit with highly efficient electro-spindle**

The powerful profil 92 spindle shaper unit has been specially developed for industrial use. Direct drive via an electro-spindle. In Format4 machine units, the tilt segment „Easy-Glide“ meets the highest requirements for trade and industry. A precise, forced guided, double suspension guarantees maximum load bearing and zero backlash tilting.



**Quick-change cutter arbor system HSK F63**

The profil 92 electro-spindle cutter arbor is equipped with an HSK F63 quick-change tool system with pneumatic clamping and an air jet nozzle system for cleaning the contact surfaces. In a matter of seconds, cutter arbors with pre-mounted cutter tools can be changed for series milling work. The HSK F63 quick-change cutter arbor system also ensures maximum flexibility and efficiency when using different cutter arbor diameters or when using shaft cutters with collet chucks.



**Easy-Glide – tilting of the unit without lubricants or maintenance**

The patented tilt segment „Easy-Glide“ fulfills the highest requirements in businesses and industries. A precise, forced guided, double suspension guarantees maximum load bearing, zero backlash tilting, and is absolutely maintenance free. A special, highly durable synthetic material situated in the guide of the tilting segment ensures extremely smooth movement and long-lasting precision. The tilting guide system, a synthetic material tried and tested in aerospace and lock construction, works without the requirement of lubrication and is totally resistant to dust.

**On the „Easy-Glide“ system have a 6 year guarantee!**



**Front pull-out**  
With the pull-out extension, even large work pieces can be processed with ease.



**Electrical height-adjustable feed support**  
The height of the power feeder is set via the self-explanatory e-motion control on the 15" touchscreen. The infeed unit positions itself to the selected setting value by means of an electric motor, and the integrated automatic on/off switch ensures absolute ease of operation. For set-up work, the feeder is swivelled completely out of the working area.



**Parts list holder with clipboard**  
The convenient parts list holder with A4 clipboard is mounted on the overhead control panel, keeping your parts lists in sight at all times.

**Control**

Operating the profil 92 precision spindle moulder is very straightforward, intuitive and fast with the self-explanatory e-motion control on the 15" touchscreen control panel located at eye level. The touchscreen control panel can be rotated and tilted for the individual operating position or swivelled completely out of the working area.



The databases and programme memories included in the e-motion software package save you a great deal of time when setting up and adjusting the profil 92.

- » The tool database stores an unlimited number of accessible milling tools.
- » Work processes, whether simple, complex or recurring, can be stored and accessed as programmes without limitation.
- » All settings of the last five entries are saved so accessing these values again saves valuable time.
- » The network preparation and the USB interface ensure easy updating of the tool database and software.
- » Remote service is provided via Teamviewer.

## Technical specifications

| Electrics                              |  | profil 92 M e-motion |
|--|--|----------------------|
| 001                                    | 3x 400 V motor voltage   | S                    |
| 002                                    | Special voltage (208V/230V/400V/480V)  | O                    |
| 004                                    | 50 Hz motor frequency  | S                    |
| 005                                    | 60 Hz motor frequency  | W                    |
| 008                                    | 7.5 kW motor with variable rotation speed  | O                    |
| 009                                    | 10 kW motor with variable rotation speed   | O                    |
| 12                                     | Switch contact for the control of an extractor   | O                    |
| 13                                     | Operating hour meter   | S                    |
| 14                                     | 3-phase CEE coupling for additional equipment with time-delayed connection (essential for the use of a power feeder)   | S                    |
| Spindle moulder unit and spindle fence |  |                      |
| 106                                    | HSK 63F cutter-Ø 30 mm, 140 mm usable height, speeds from 1,000 – 10,000   | O                    |
| 107                                    | HSK 63F cutter-Ø 1 1/4", 140 mm, instead of Ø 30 mm, speed from 1,000 – 10,000   | O                    |
| 108                                    | HSK 63F cutter-Ø 40 mm, 160 mm, instead of Ø 30 mm, speeds from 1,000 – 10,000   | O                    |
| 109                                    | HSK 63F cutter-Ø 50 mm, 160 mm, instead of Ø 30 mm, speeds from 1,000 – 10,000   | O                    |
| 110                                    | Collet chuck OZ HSK F63, clamping range 2-25 mm, instead of Ø 30 mm, speeds from 11,000 – 18,000   | W                    |
| 112                                    | Shaper fence 250 for toolsdia. max. 250 mm   | S                    |
| 116                                    | 550 mm anodised aluminium fence plates   | S                    |
| 117                                    | 550 mm spindle fence plate, aluminium anodised with safety bar guides  | O                    |
| 118                                    | „Integral“ safety bar guides 650 mm  | O                    |
| 123                                    | Centrex spindle moulder guard  | S                    |
| 180                                    | 1270 mm extendable frame with emergency stop   | O                    |
| Control                                |  |                      |
| 19                                     | 255 mm table opening with controlled, eccentric insert rings   | O                    |
| -                                      | e-motion control system with touch function in control panel installed at eye level; USB interface and preparation for network connection; the control panel can be optimally adjusted to the right position for the operator and can be swung away from the working area. | S                    |
| -                                      | Position controlled height adjustment;   | S                    |
| -                                      | Position controlled angle adjustment +/-46°  | S                    |
| -                                      | Position controlled spindle moulder fence  | S                    |
| 183                                    | 670 mm table extension on both sides with 2200 mm extendable frame   | O                    |
| -                                      | Variable rotation speed rpm  | 1.000-18.000         |
| -                                      | Table opening 320 mm   | S                    |
| Important accessories                  |  |                      |
| 215                                    | Application routing device for fixed bed spindle moulders  | O                    |
| 220                                    | 604-110 - Parts list holder with A4 clipboard  | O                    |
| -                                      | 300-04-0700 - Collet chuck HSK F63 with ball bearing collet nut A76/RL. Clamping range 2-25 mm for OZ collet chuck   | O                    |
| -                                      | 606-113 - HSK 63F spindle-Ø 30 mm, 140 mm useable height   | O                    |
| -                                      | 606-114 - HSK 63F spindle-Ø 40 mm, 160 mm useable height   | O                    |
| -                                      | 606-115 - HSK 63F cutter-Ø 50 mm, 160 mm usable height   | O                    |
| -                                      | 606-116 - HSK 63F spindle-Ø 1 1/4", 140 mm useable height  | O                    |
| Feeder device                          |  |                      |
| 212                                    | Tilt-away device for power feeder with pneumatic spring  | O                    |
| 213                                    | Electrical height-adjustable feed support incl. horizontal tube  | O                    |
| General                                |  |                      |
| 27                                     | Prepared for minimum transport width 950 mm  | O                    |
| -                                      | Extraction connection-Ø in mm Spindle fence/below table level spindle aggregate  | 140/80               |
| -                                      | Working height in mm   | 890                  |
| -                                      | Weight kg (with standard configuration)  | 730                  |
| -                                      | Min. transport width in mm   | 1305 (950)           |

## Product range

Sliding Table Panel Saws

Shapers

Planer

Edgebanders

Wide Belt Sanding Machines

Heated Veneer Presses

HVP heated veneer press  
With Elkom® electric heating platens with warm water heating with thermal oil heating connection to an existing heating system

CNC machining centres

Nesting-CNC Machining Centres

Industrial Panel Saws

Vacuum panel lifter Return systems Feeding Units



# **FORMAT 4**®

## **FORMAT4 Uncompromising expertise for the highest of requirements**

The Felder Group premium brand has met the highest standards of professional users since 2001. The customised high-performance solutions are uncompromisingly innovative, offer maximum operating comfort and complete productivity.

### **FELDER GROUP**

KR-Felder-Straße 1  
A-6060 HALL in Tirol

🇬🇧 Tel. 01908 635000  
[www.format-4.uk](http://www.format-4.uk)  
[Contact](#)

🇮🇪 Tel. 0906625756  
[www.format-4.ie](http://www.format-4.ie)  
[Contact](#)

🇮🇳 Tel. 1800 274 3040  
[www.format-4.in](http://www.format-4.in)  
[Contact](#)

🌐 Tel. +43 5223 58500  
[www.format-4.int](http://www.format-4.int)  
[Contact](#)