

FORMAT 4®

dual 51

PERFECT PRECISION
AT THE TOUCH
OF A BUTTON

FORMAT 4®



dual 51

Perfect precision at the touch of a button



Solid wood



Are you looking for a jointer-planer that meets your professional requirements in regards to precision, reliability and ease of use? The Format4 dual 51 sets new standards in all areas. Solid ribbed planing table and a 4 column jointing table guide system ensure high stability.

The fully enclosed planer table adjustment system, 4 $\frac{23}{32}$ " cutting diameter and patented Format4 system cutterblock guarantee perfect planing results. An intuitive operating concept reduces the effort in changing from jointing to planing to a minimum, increases the productivity and ensures that the dual 51 is a profitable investment for workshops, businesses and industry.



dual 51

- » Intuitive, synchronised opening of the dual jointer table
- » The Format4 planing fence: A masterpiece of stability, precision and space saving design
- » Highest operational safety, simplest operation: The new Format4 planer guard
- » The Format4 system cutterblock has guaranteed perfect planing results for decades
- » The innovative Silent-Power® spiral knife cutterblock cuts noise emission by half

FORMAT4 Premium Machines for Premium Requirements

- | | |
|--|---|
| » Constantly high performance in industrial continuous operation | » Quality and precision from AUSTRIA |
| » Customer specific optimised production solutions | » Uncompromising productivity |
| » Solid design with premium components | » Perfect service package before, during and after the purchase |
| » Wide range of configuration packages with high-tech solutions | » Tailor made financing solutions |
| » Complete engineering precision | » Mechanical engineering experience since 1956 |
| » Premium user comfort | |

The most important highlights at a glance



Silent-Power®

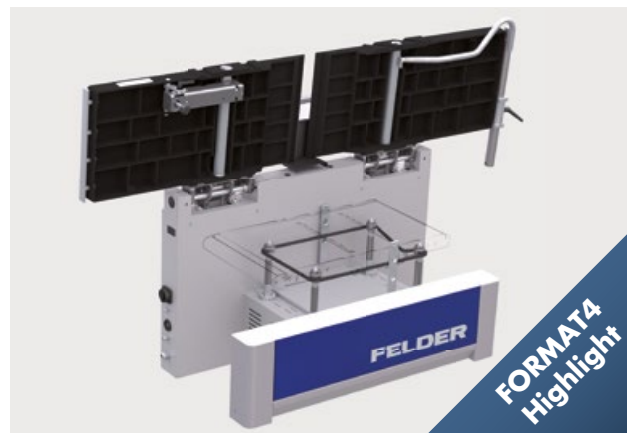
The Silent-Power® Spiral Cutterblock reduces noise emissions during planing by more than half. Specially developed tungsten carbide blades with their constant pulling cut, guarantee a tear free planing finish of every wood type. The optimized extraction hood ensures that the noticeably shorter chips are effectively extracted and land considerably more compact in the dust bags. This more compact filling of the chip bags, saves you from having to frequently change the bags. Maximum reliability and highest level of planing quality – the innovative new development from Format4 offers a planing system with knives that have a usable life up to 20 times longer when compared to a conventional HSS-blade system. Damaged blades can be exchanged individually, removed and replaced with a few turns of the hand. The advantages at a glance

- » Sensationally quiet, noise emissions halved
- » Blade life up to 20 times longer
- » Four highly precise cutting edges on each knife



Intuitive Format4 changeover concept

The tried and tested Format4 operating concept reduces the time required for changeover from planing to jointing to a minimum. The intuitive table clamping system makes it possible to synchronously unlock and lift the planing tables with one hand movement, industrial springs assist in the opening.



Outstanding stability and long-lasting precision

Four trapezoidal support spindles ensure utmost precision and high load bearing capacity. Vertical guides integrated into the side of the machine chassis absorb the resulting outfeed side pressure and guide the jointing table into position with an accuracy of a tenth of a millimeter.

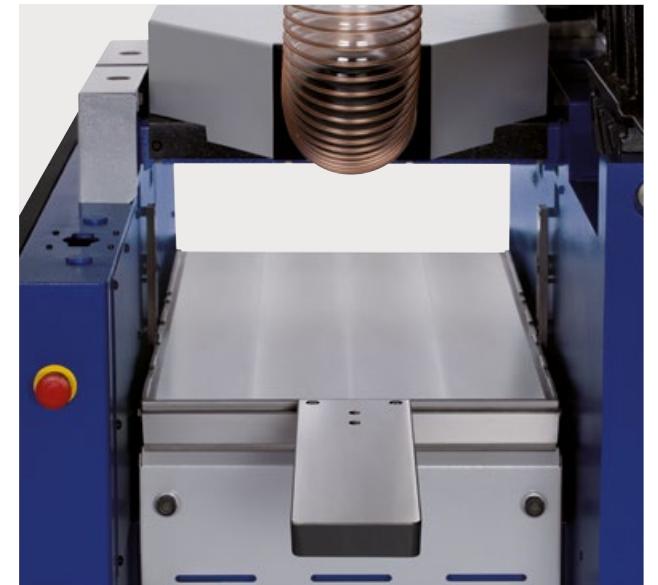
FORMAT 4®

Details



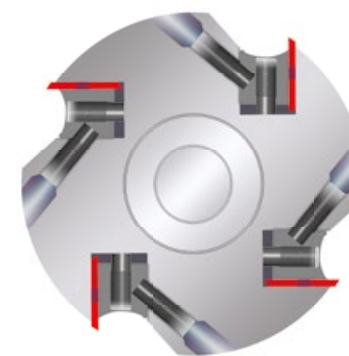
Change the blades in record time

For decades, the Format4 system with its disposable, reversible planing knives has proven its value. Perfectly manufactured and adjusted in the factory, there are no further adjustments needed and no unnecessary expensive adjusting tools are required.



Maximum planing height for professional requirements

With the amply dimensioned jointing height of up to 10", even processing large solid wood trusses is simple and effort free.



See and feel the incredible smooth finish!

$4 \frac{23}{32}$ cutting diameter and unique Format4 planer knife system with reversible blades – for many decades a guarantee for excellent planing results. Maximum blade life and minimum cost of the blades ensure considerable savings.



A clean solution

The aerodynamically optimized construction of the dust extraction hood with its ample chip space guarantees an ideal chip extraction and clean working surface.



Power-Drive
The fully electrical “Power-Drive” planer table control offers the most precise adjustment and repeat accuracy. With a turn of the knob, you can quickly adjust the jointing height, then fine-adjust using the button. With the integrated LED-display, you can easily see the current actual value.



„Digi-Drive”
The programmable “Digi-Drive” planing table control makes it possible to enter the planing height using the numeric keypad and the planing bed positions itself automatically and precisely. Two integrated LED displays show the current target and actual values. To optimize production you can save incremental measurements and individual jointing table positions.

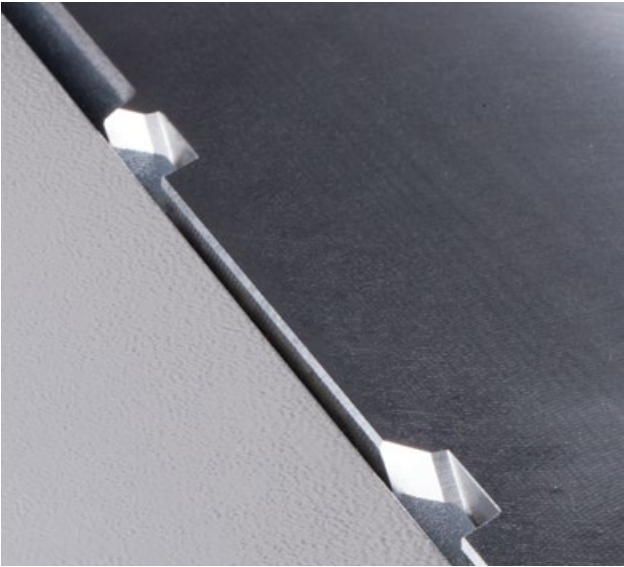
Safe and productive – the Format4 power feeder
A power feeder increases the safety and comfort when planing without reducing the planing width. The constant pressure ensures a perfectly smooth and even planing finish.



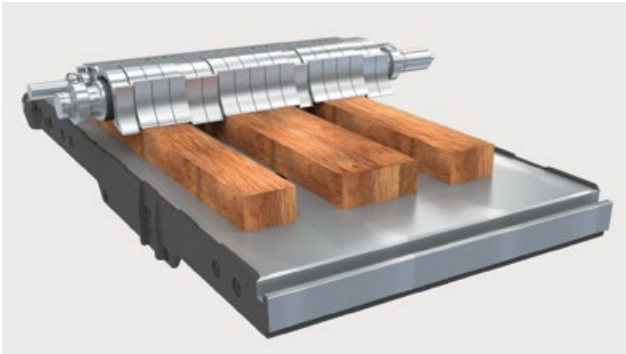
Variable infeed
Regardless of the type of wood and grain, the variable feed speed of between 4–16 m/min always guarantees a perfect planing result.



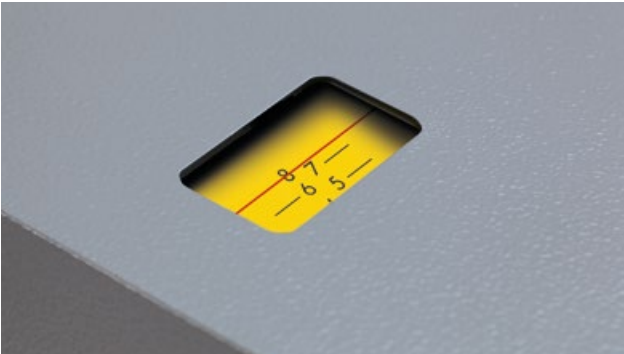
Depth of cut quick adjustment
With the new ergonomically shaped depth of cut adjustment handle, you can adjust the depth of cut quickly and precisely.



Patented planer adjustment system
Adjustment precision. This is ensured by the patented planing table adjustment system which has prismatic guides.



Spring loaded segmented pressure beam
A recommended option when planing with a small depth of cut, with very thin workpieces or workpieces with different thicknesses.



Adjust the depth of cut
The depth of cut can be adjusted and set at any position up to 8 mm. The integrated lens makes it possible to accurately read the setting, ensuring exact results.



Format4 Planer Guard
Maximum operational safety and an unprecedented ease of use. The space saving jointer guard integrated into the machine chassis also stabilizes the workpiece when jointing and beveling the narrow edge.



The tiltable Format4 auxiliary fence
When processing thin or narrow workpieces the new tiltable auxiliary fence attached to the jointer fence, guarantees a safe and comfortable planing operation.



Practical added value with the Format4 table extension
With the proven Format4 table extension systems, you can extend your jointing table quickly and without tools by up to 39 3/8".



Stability, precision and space saving with the Format4 planing fence
A masterpiece of stability, precision and space saving design – the innovative parallelogram system on the Format4 planing fence allows you to be able to position your machine directly next to the workshop wall, without restricting the planing width. The jointer fence can be tilted to any position between 90°–45°, the jointer fence will always remain flush with the jointing table.

Technical specifications

Electrics		dual 51
001	3x 400 V motor voltage	S
002	3x 230 V motor voltage	W
004	50 Hz motor frequency	S
005	60 Hz motor frequency	W
007	7.5 HP (5.5 kW) S6/40%	S
008	10 HP (7.35 kW) S6/40%	O
009	13.5 HP (10 kW) S6/40%	O
10	STAR-delta-START	S
12	Switch contact for the control of an extractor	O
13	Operating hour meter	O
14	3-phase CEE coupling for additional equipment with time-delayed connection and emergency stop (essential for the use of a power feeder)	O

Planing unit and cutterblock		
30	Planing width in mm	510
32	Professional planer fence with parallelogram adjustment, fence size 51 3/16 x 6 11/16"	S
34	Aigner combination planer fence with auxiliary fence and parallelogram adjustment, fence size 51 3/16"	O
36	Standard EURO planer guard	S
37	Comfort EURO planer guard	O
38	SUVA planer guard	O
39	4-knife Format-4 system cutterblock	S
40	4 knife Standard cutter-block using traditional single sided planer knives	O
41	4 knife TERSA cutter-block	O
44	Silent-Power spiral cutterblock	O
-	Overall planer table length in mm	2250
-	Number of knives - Silent-POWER spiral cutterblock	77
-	Infeed planer table length in mm	1100

Jointer and feed gears		
53	Electric height adjustment for jointing table ("Power-Drive" D1)	S
55	Electronic digital display for the jointing table adjustment	S
57	Variable speed 4–16 m/min	S
59	2 adjustable rollers under the jointing table, adjustment range 0–0.5 mm	O
60	Option to preselect "Digi-Drive" D1 dimensions for position control of the jointer table height	O
61	Rubber infeed roller 20 5/64" (#62)	O
62	Rubber outfeed roller 20 5/64"	O
63	Spring loaded segmented pressure beam, infeed	O
-	Jointing width in mm	504
-	Min.-max. jointing height in mm	1/8"–10" (3–254 mm)
-	Min. workpiece length in mm	250
-	Maximum depth of cut in mm	8

Important accessories

210	Table extension coupling system for planer tables 20 5/64"	○
211	Jointer table workpiece roller on the infeed side	○
212	Socket for feeder mount	○
224	Table extension with workpiece roller for the jointer table (20 5/64 - 22 7/16"), limited to a maximum of 5 mm planing depth!	○

General

-	Extraction connection Ø in mm	140
-	Working height in mm	890
-	Weight kg (with standard configuration)	900

Packaging

221	Preparation for container transport dual 51, plan 51	○
223	IPPC packaging	○

dual 51

Product range

Sliding Table
Panel Saws



Shapers



Planer



Edgebanders



Wide Belt
Sanding
Machines



Heated Veneer Presses



CNC
machining
centers



Nesting-CNC
Machining
centers



Industrial
Panel
Saws



Vacuum panel lifter
Return systems
Feeding Units



FORMAT 4®

FORMAT4 Uncompromising expertise for the highest of requirements

The Felder Group premium brand has met the highest standards of professional users since 2001.

The customized high-performance solutions are uncompromisingly innovative, offer maximum operating comfort and complete productivity.

FELDER GROUP

KR-Felder-Straße 1
A-6060 HALL in Tirol

☎ Tel. +1 866-792-5288

www.format-4.us

[Contact](#)